

PLAN OF SURVEY OF  
PART OF LOT 21,  
CONCESSION 5  
(GEOGRAPHIC TOWNSHIP OF PICKERING)  
CITY OF PICKERING  
REGIONAL MUNICIPALITY OF DURHAM

SCALE 1:500  
10m 5m 0m 10m 20m 30m 40 metres

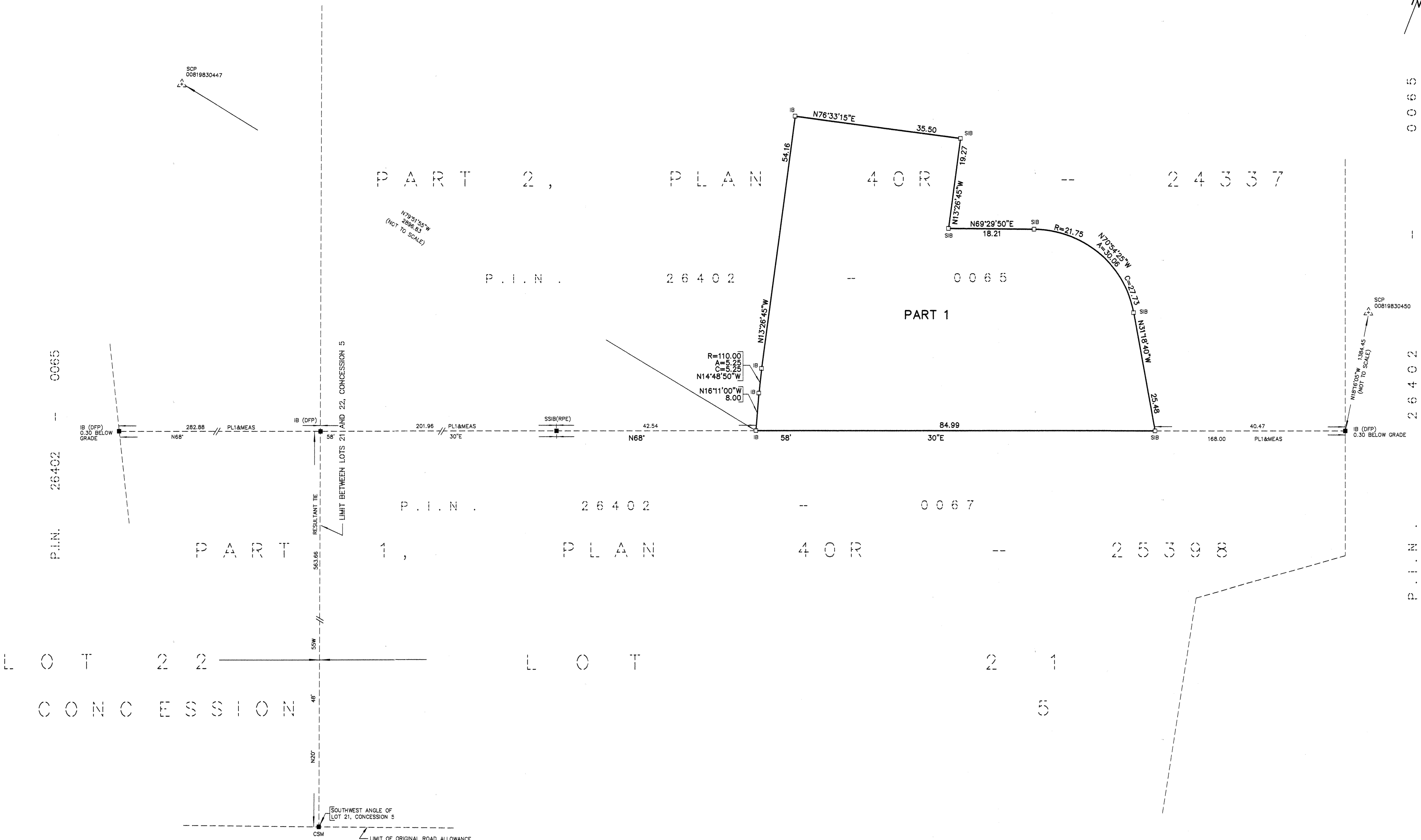
RADY-PENTEK & EDWARD SURVEYING LTD., O.L.S.

METRIC  
DISTANCES AND COORDINATES SHOWN ON THIS PLAN ARE IN METRES  
AND CAN BE CONVERTED TO FEET BY DIVIDING BY 0.3048

I REQUIRE THIS PLAN TO BE DEPOSITED  
UNDER THE LAND TITLES ACT.  
DATE Aug 30<sup>th</sup>, 2016  
C.P. EDWARD  
C. P. EDWARD O.L.S.

PLAN 40R-29345  
RECEIVED AND DEPOSITED  
DATE Sept. 7, 2016  
"P. JOHNSTONE"  
REPRESENTATIVE FOR LAND REGISTRAR FOR THE  
LAND TITLES DIVISION OF DURHAM (No.40)

SCHEDULE				
PART	PART OF LOT	CONCESSION	PART OF P.I.N.	AREA Sq. m
1	21	5	26402-0065	4087.83



NOTES

- DENOTES MONUMENT SET
- DENOTES MONUMENT FOUND
- SIB DENOTES STANDARD IRON BAR
- IB DENOTES IRON BAR
- CSM DENOTES CUT STONE MONUMENT
- P.I.N. DENOTES PROPERTY IDENTIFIER NUMBER
- PL1 DENOTES PLAN 40R-25398
- (RPE) DENOTES RADY-PENTEK & EDWARD SURVEYING LTD., O.L.S.
- (DFP) DENOTES DONEVAN FLEISCHMANN PETRICH LTD., O.L.S.
- SCP DENOTES SPECIFIED CONTROL POINT

BEARING NOTE

BEARINGS SHOWN HEREON ARE GRID BEARINGS DERIVED FROM THE HORIZONTAL CONTROL MONUMENTS LISTED IN THE FOLLOWING TABLE:  
 SCP 00819830450 NORTH 4864297.803 EAST 651249.896  
 SCP 00819830447 NORTH 4863462.639 EAST 648710.636  
 AND ARE REFERENCED TO THE CENTRAL MERIDIAN 81° 00' WEST LONGITUDE, ZONE 17, ONTARIO COORDINATE SYSTEM, (6° UTM), NAD-83 (ORIG.).  
 DISTANCES SHOWN ON THIS PLAN ARE GROUND DISTANCES AND CAN BE USED TO COMPUTE GRID DISTANCES BY MULTIPLYING A COMBINED SCALE FACTOR OF 0.99986.

SURVEYOR'S CERTIFICATE

I CERTIFY THAT:  
 1. THIS SURVEY AND PLAN ARE CORRECT AND IN ACCORDANCE WITH THE SURVEYS ACT, THE SURVEYORS ACT AND THE LAND TITLES ACT AND THE REGULATIONS MADE UNDER THEM.  
 2. THE SURVEY WAS COMPLETED ON THE 24<sup>th</sup> DAY OF AUGUST, 2016.  
 DATE Aug 30<sup>th</sup>, 2016  
C.P. EDWARD  
 C. P. EDWARD  
 ONTARIO LAND SURVEYOR

**rpe** RADY-PENTEK & EDWARD SURVEYING LTD.  
 ONTARIO LAND SURVEYORS  
 643 Chrislea Road, Suite 7  
 Woodbridge, Ontario L4L 8A3  
 Tel. (416) 635-5000 Fax (416) 635-5001  
 Tel. (905) 264-0881 Fax (905) 264-2099  
 Website: www.r-pe.ca  
 DRAWN: E.C. CHECKED: C.P.E.  
 JOB No. 07-228 CAD FILE No. 07228R02  
 Aug 30, 2016 - 9:38:06