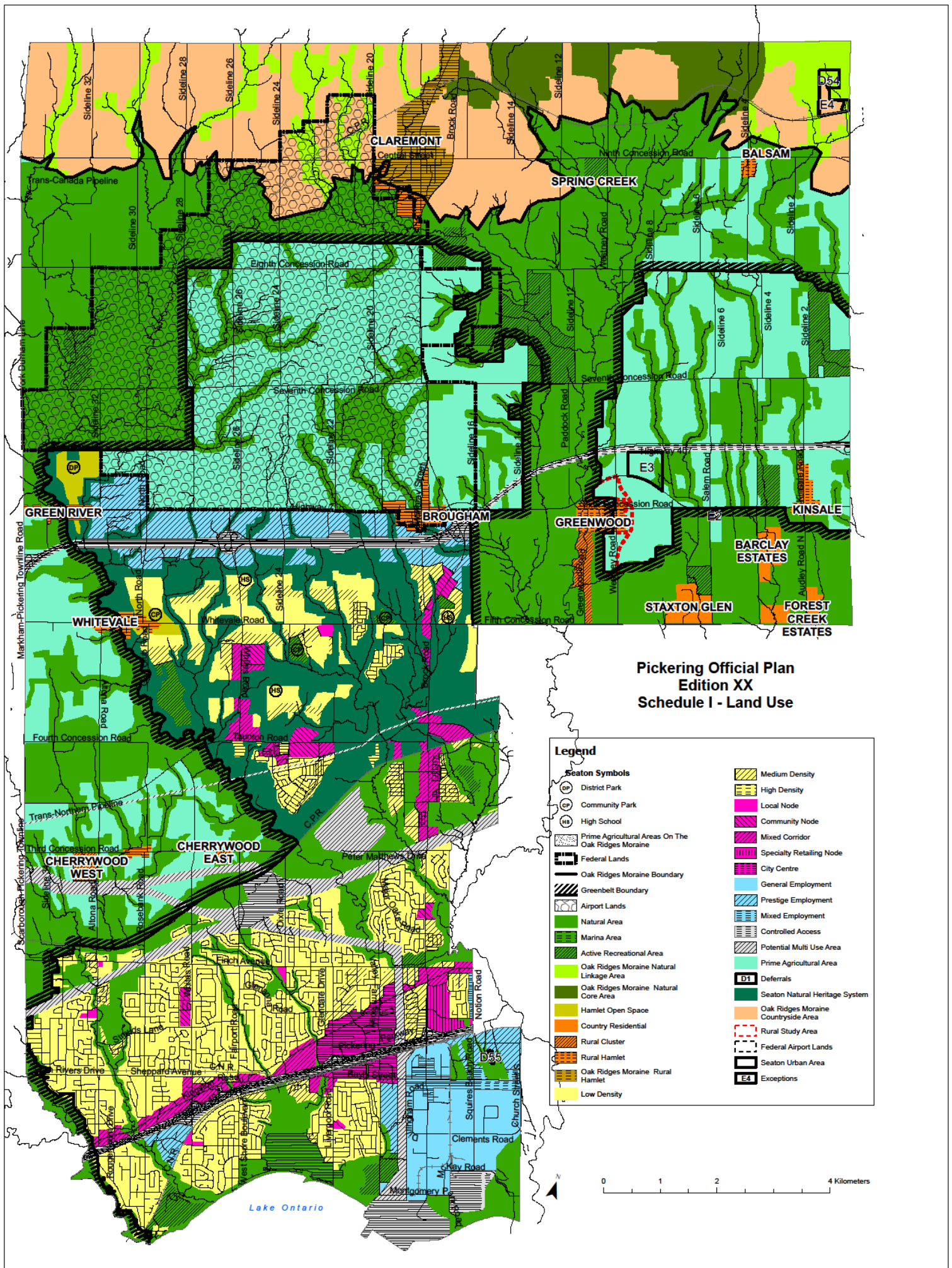


# Official Plan

## Land Use

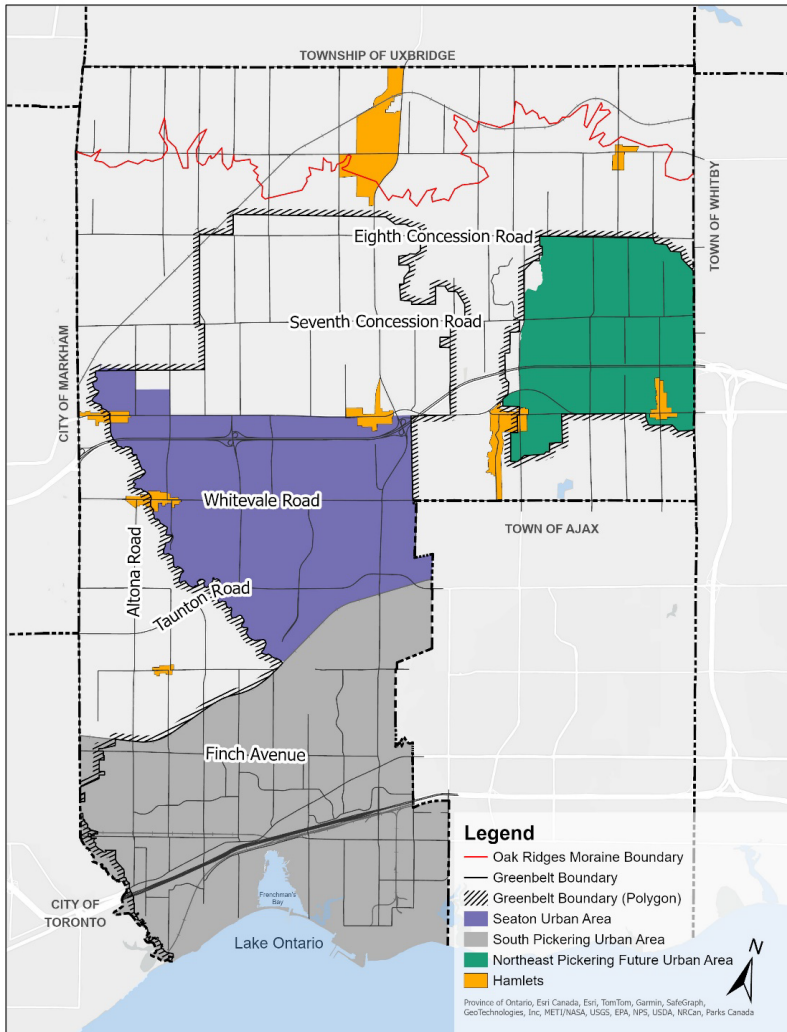




# Official Plan



## Hamlets



Many of Pickering's rural settlement areas, specifically hamlets, were settled decades or even centuries ago. There have been a significant number of decisions approved since the Official Plan was last reviewed that have or will impact rural settlement areas.

One change that could have a large impact to the hamlets is how many hamlets are, or will be, adjacent to urban areas moving forward. As Pickering grows five of the eight hamlets in Pickering will end up being within, partially within, or directly adjacent to urban areas (Seaton and future Northeast Pickering). Only Claremont, Cherrywood, and Balsam will not be within or adjacent to future urban development areas.

It is important to define the character of hamlets to ensure those elements are enhanced and celebrated as Pickering grows. The elements and qualities/character of each hamlet are unique and may benefit from a specialized approach to adequately address each community.





# Official Plan



## On-Farm Diversified Uses

Uses that are secondary to the principal agricultural use of the property and are limited in area. On-farm diversified uses include, but are not limited to, home occupations, home industries, agri-tourism uses, uses that produce value-added agricultural products.

