

KPMB

Dunbarton Fairport United Church
1066 Dunbarton Road

October 25, 2022
Issued for ZBA Submission

Waste Management Brief

Referencing Schedule P to By-Law 46-2011 Technical and Risk Management Guidelines for Waste Collection Services on Private Property, the application 1066 Dunbarton Road provides the below information for the application for Regional waste collection on this site.

Storage Area

Waste materials are stored in planter boxes at the front of each unit. These boxes hold the garbage and recycling bins until collection day at which point residents would be required to take the garbage and recycling bins out of the planter boxes and place them in the collection areas in front of each of their units. See figure 1 below for the draft version of the planter boxes.

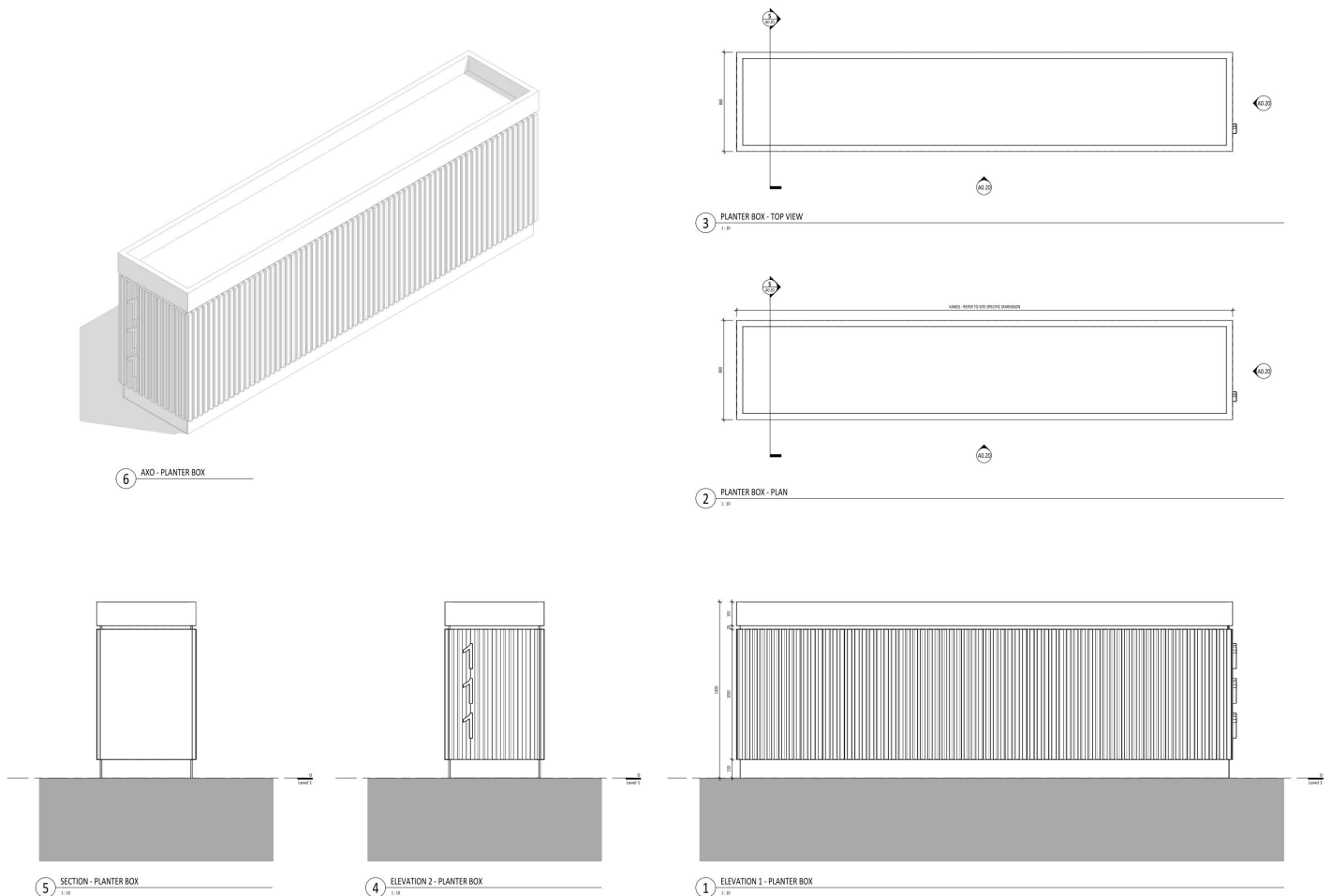


Figure 1 Initial design of planter boxes to house garbage in front of each unit

KPMB

Dunbarton Fairport United Church
1066 Dunbarton Road

October 25, 2022

Issued for ZBA Submission

Collection Area

The proposed collection areas are along the internal access route of the development in front of each and every dwelling unit. The overhead clearance of 7 meters is provided for all obstructions including wires, balconies and trees. In front of the 3 storey single unit townhouses the residents would use their driveway as the collection point on a garbage or recycling pickup day. For the 3 storey walk-up units that have 3 separate units within them, a collection pad has been provided for each unit with the unit numbers identified on them. The collection pads are sized to fit 2 blue bins, a green bin, and two bags of garbage. See figure 1 for an example of the collection pads placed on the site in front of the Walk-up units.



Figure 2 Example of collection pad in front of walk-up units for residents to place garbage and recycling bins on collection days

Access Routes

The internal roadways are 6.5m with a turning radii of 13m as required by Schedule P. Turning diagrams can be found in the transportation package included with this ZBA submission from BA Group.