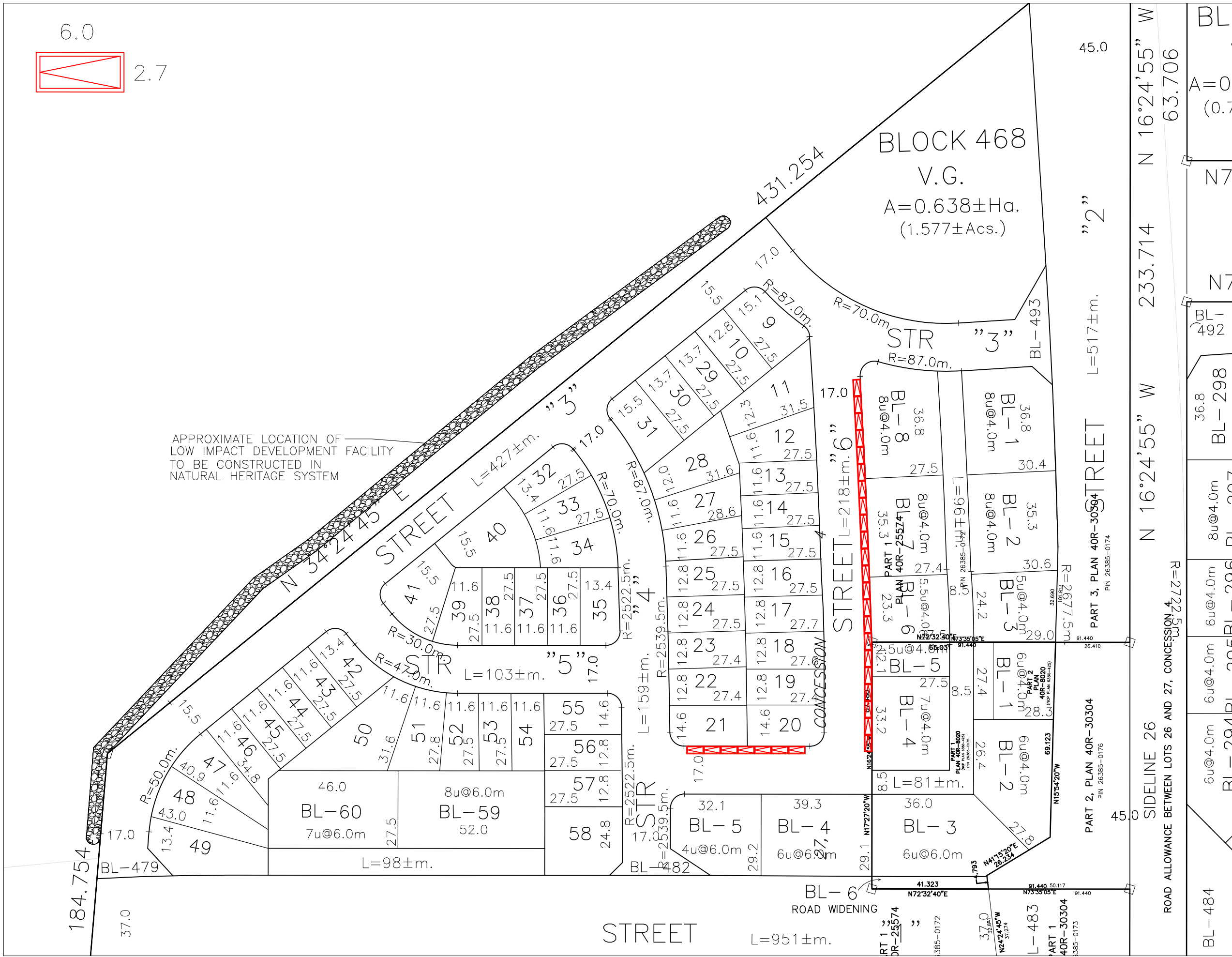


APPROXIMATE LOCATION OF
LOW IMPACT DEVELOPMENT FACILITY
TO BE CONSTRUCTED IN
NATURAL HERITAGE SYSTEM



BL-484	BL-294	BL-295	BL-296	BL-297	BL-298	BL-492	BL-493
6u@4.0m	6u@4.0m	6u@4.0m	8u@4.0m	8u@4.0m	8u@4.0m	8u@4.0m	8u@4.0m
BL-294	BL-295	BL-296	BL-297	BL-298	BL-492	BL-493	BL-493
63.706	63.706	63.706	63.706	63.706	63.706	63.706	63.706

ROAD ALLOWANCE BETWEEN LOTS 26 AND 27, CONCESSION 4

SIDELINE 26

ROAD WIDENING

CONCESSION

STREET "2"

STREET "3"

STREET "4"

STREET "5"

STREET "6"

BL-483

BL-482

BL-479

BL-481

BL-480

BL-478

BL-477

BL-476

BL-475

BL-474

BL-473

BL-472

BL-471

BL-470

BL-469

BL-468

BL-467

BL-466

BL-465

BL-464

BL-463

BL-462

BL-461

BL-460

BL-459

BL-458

BL-457

BL-456

BL-455

BL-454

BL-453

BL-452

BL-451

BL-450

BL-449

BL-448

BL-447

BL-446

BL-445

BL-444

BL-443

BL-442

BL-441

BL-440

BL-439

BL-438

BL-437

BL-436

BL-435

BL-434

BL-433

BL-432

BL-431

BL-430

BL-429

BL-428

BL-427

BL-426

BL-425

BL-424

BL-423

BL-422

BL-421

BL-420

BL-419

BL-418

BL-417

BL-416

BL-415

BL-414

BL-413

BL-412

BL-411

BL-410

BL-409

BL-408

BL-407

BL-406

BL-405

BL-404

BL-403

BL-402

BL-401

BL-400

BL-399

BL-398

BL-397

BL-396

BL-395

BL-394

BL-393

BL-392

BL-391

BL-390

BL-389

BL-388

BL-387

BL-386

BL-385

BL-384

BL-383

BL-382

BL-381

BL-380

BL-379

BL-378

BL-377

BL-376

BL-375

BL-374

BL-373

BL-372

BL-371

BL-370

BL-369

BL-368

BL-367

BL-366

BL-365

BL-364

BL-363

BL-362

BL-361

BL-360

BL-359

BL-358

BL-357

BL-356

BL-355

BL-354

BL-353

BL-352

BL-351

BL-350

BL-349

BL-348

BL-347

BL-346

BL-345

BL-344

BL-343

BL-342

BL-341

BL-340

BL-339

BL-338

BL-337

BL-336

BL-335

BL-334

BL-333

BL-332

BL-331

BL-330

BL-329

BL-328

BL-327

BL-326

BL-325

BL-324

BL-323

BL-322

BL-321

BL-320

BL-319

BL-318

BL-317

BL-316

BL-315

BL-314

BL-313

BL-312

BL-311

BL-310

BL-309

BL-308

BL-307

BL-306

BL-305

BL-304

BL-303

BL-302

BL-301

BL-300

BL-299

BL-298

BL-297

BL-296

BL-295

BL-294

BL-293

BL-292

BL-291

BL-290

BL-289

BL-288

BL-287

BL-286

BL-285

BL-284

BL-283

BL-282

BL-281

BL-280

BL-279

BL-278

BL-277

BL-276

BL-275

BL-274

BL-273

BL-272

BL-271

BL-270

BL-269

BL-268

BL-267

BL-266

BL-265

BL-264

BL-263

BL-262

BL-261

BL-260

BL-259

BL-258

BL-257

BL-256

BL-255

BL-254

BL-253

BL-252

BL-251

BL-250

BL-249

BL-248

BL-247

BL-246

BL-245

BL-244

BL-243

BL-242

BL-241

BL-240

BL-239

BL-238

BL-237

BL-236

BL-235

BL-234

BL-233

BL-232

BL-231

BL-230

BL-229

BL-228

BL-227

BL-226

BL-225

BL-224

BL-223

BL-222

BL-221

BL-220

BL-219

BL-218

BL-217

BL-216

BL-215

BL-214

BL-213

BL-212

BL-211

BL-210

BL-209

BL-208

BL-207

BL-206

BL-205

BL-204

BL-203

BL-202

BL-201

BL-200

BL-199

BL-198

BL-197

BL-196

BL-195

BL-194

BL-193

BL-192

BL-191

BL-190

BL-189

BL-188

BL-187

BL-186

BL-185

BL-184

BL-183

BL-182

BL-181

BL-180

BL-179

BL-178

BL-177

BL-176

BL-175

BL-174

BL-173

BL-172

BL-171

BL-170

BL-169

BL-168

BL-167

BL-166

BL-165

BL-164

BL-163

BL-162

BL-161

BL-160

BL-159

BL-158

BL-157

BL-156

BL-155

BL-154

BL-153

BL-152

BL-151

BL-150

BL-149

BL-148

BL-147

BL-146

BL-145

BL-144

BL-143

BL-142

BL-141

BL-140

BL-139

BL-138

BL-137

BL-136

BL-135

BL-134

BL-133

BL-132

BL-131

BL-130

BL-129

BL-128

BL-127

BL-126

BL-125

BL-124

BL-123

BL-122

BL-121

BL-120

BL-119

BL-118

BL-117

BL-116

BL-115

BL-114

BL-113

BL-112

BL-111

BL-110

BL-109

BL-108

BL-107

BL-106

BL-105

BL-104

BL-103

BL-102

BL-101

BL-100

BL-99

BL-98

BL-97

BL-96

BL-95

BL-94

BL-93

BL-92

BL-91

BL-90

BL-89

BL-88

BL-87

BL-86

BL-85

BL-84

BL-83

BL-82

BL-81

BL-80

BL-79

BL-78

BL-77

BL-76

BL-75

BL-74

BL-73

BL-72

BL-71

BL-70

BL-69

BL-68

BL-67

BL-66

BL-65

BL-64

BL-63

BL-62

BL-61

BL-60

BL-59

BL-58

BL-57

BL-56

BL-55

BL-54

BL-53

BL-52

BL-51

BL-50

BL-49

BL-48

BL-47

BL-46

BL-45

BL-44

BL-43

BL-42

BL-41

BL-40

BL-39

BL-38

BL-37

BL-36

BL-35

BL-34

BL-33

BL-32

BL-31

BL-30

BL-29

BL-28

BL-27

BL-26

BL-25

BL-24

BL-23

BL-22

BL-21

BL-20

BL-19

BL-18

BL-17

BL-16

BL-15

BL-14

BL-13

BL-12

BL-11

BL-10

BL-9

BL-8

BL-7

BL-6

BL-5

BL-4

BL-3

BL-2

BL-1

BL-483

BL-482

BL-481

BL-480

BL-479

BL-478

BL-477

BL-476

BL-475

BL-474

BL-473

BL-472

BL-471

BL-470

BL-469

BL-468

BL-467

BL-466

BL-465

BL-464

BL-463

BL-462

BL-461

BL-460

BL-459

BL-458

BL-457

BL-456

BL-455

BL-454

BL-453

BL-452

BL-451

BL-450

BL-449

BL-448

BL-447

BL-446

BL-445

BL-444

BL-443

BL-442

BL-441

BL-440

BL-439

BL-438

BL-437

BL-436

BL-435

BL-434

BL-433

BL-432

BL-431

BL-430

BL-429

BL-428

BL-427

BL-426

BL-425

BL-424

BL-423

BL-422

BL-421

BL-420

BL-419

BL-418

BL-417

BL-416

BL-415

BL-414

BL-413

BL-412

BL-411

BL-410

BL-409

BL-408

BL-407

BL-406

BL-405

BL-404

BL-403

BL-402

BL-401

BL-400

BL-399

BL-398

BL-397

BL-396

BL-395

BL-394

BL-393

BL-392

BL-391

BL-390

BL-389

BL-388

BL-387

BL-386

BL-385

BL-384

BL-383

BL-382

BL-381

BL-380

BL-379

BL-378

BL-377

BL-376

BL-375

BL-374

BL-373

BL-372

BL-371

BL-370

BL-369

BL-368

BL-367

BL-366

BL-365

BL-364

BL-363

BL-362

BL-361

BL-360

BL-359

BL-358

BL-357

BL-356

BL-355

BL-354

BL-353

BL-352

BL-351

BL-350

BL-349

BL-348

BL-347

BL-346

BL-345

BL-344

BL-343

BL-342

BL-341

BL-340

BL-339

BL-338

BL-337

BL-336

BL-335

BL-334

BL-333

BL-332

BL-331

BL-330

BL-329

BL-328

BL-327

BL-326

BL-325

BL-324

BL-323

BL-322

BL-321

BL-320

BL-319

BL-318

BL-317

BL-316

BL-315

BL-314

BL-313

BL-312

BL-311

BL-310

BL-309

BL-308

BL-307

BL-306

BL-305

BL-304

BL-303

BL-302

BL-301

BL-300

BL-299

BL-298

BL-297

BL-296

BL-295

BL-294

BL-293

BL-292

BL-291

BL-290

BL-289

BL-288

BL-287

BL-286

BL-285

BL-284

BL-283

BL-282

BL-281

BL-280

BL-279

BL-278

BL-277

BL-276

BL-275

BL-274

BL-273

BL-272

BL-271

BL-270

BL-269

BL-268

BL-267

BL-266

BL-265

BL-264

BL-263

BL-262

BL-261

BL-260

BL-259

BL-258

BL-257

BL-256

BL-255

BL-254

BL-253

BL-252

BL-251

BL-250

BL-249

BL-248

BL-247

BL-246

BL-245

BL-244

BL-243

BL-242

BL-241

BL-240

BL-239

BL-238

BL-237

BL-236

BL-235

BL-234

BL-233

BL-232

BL-231

BL-230

BL-229

BL-228

BL-227

BL-226

BL-225

BL-224

BL-223

BL-222

BL-221

BL-220

BL-219

BL-218

BL-217

BL-216

BL-215

BL-214

BL-213

BL-212

BL-211

BL-210

BL-209

BL-208

BL-207

BL-206

BL-205

BL-204

BL-203

BL-202

BL-201

BL-200

BL-199

BL-198

BL-197

BL-196

BL-195

BL-194

BL-193

BL-192

BL-191

BL-190

BL-189

BL-188

BL-187

BL-186

BL-185

BL-184

BL-183

BL-182

BL-181

BL-180

BL-179

BL-178

BL-177

BL-176

BL-175

BL-174

BL-173

BL-172

BL-171

BL-170

BL-169

BL-168

BL-167

BL-166

BL-165

BL-164

BL-163

BL-162

BL-161

BL-160

BL-159

BL-158

BL-157

BL-156

BL-155

BL-154

BL-153

BL-152

BL-151

BL-150

BL-149

BL-148

BL-147

BL-146

BL-145

BL-144

BL-143

BL-142

BL-141

BL-140

BL-139

BL-138

BL-137

BL-136

BL-135

BL-134

BL-133

BL-132

BL-131

BL-130

BL-129

BL-128

BL-127

BL-126

BL-125

BL-124

BL-123

BL-122

BL-121

BL-120

BL-119

BL-118

BL-117

BL-116

BL-115

BL-114

BL-113

BL-112

BL-111

BL-110

BL-109

BL-108

BL-107

BL-106

BL-105

BL-104

BL-103

BL-102

BL-101

BL-100

BL-99

BL-98

BL-97

BL-96

BL-95

BL-94

BL-93

BL-92

BL-91

BL-90

BL-89

BL-88

BL-87

BL-86

BL-85

BL-84

BL-83

BL-82

BL-81

BL-80

BL-79

BL-78

BL-77

BL-76

BL-75

BL-74

BL-73

BL-72

BL-71

BL-70

BL-69

BL-68

BL-67

BL-66

BL-65

BL-64

BL-63

BL-62

BL-61

BL-60

BL-59

BL-58

BL-57

BL-56

BL-55

BL-54

BL-53

BL-52

BL-51

BL-50

BL-49

BL-48

BL-47

BL-46

BL-45

BL-44

BL-43

BL-42

BL-41

BL-40

BL-39

BL-38

BL-37

BL-36

BL-35

BL-34

BL-33

BL-32

BL-31

BL-30

BL-29

BL-28

BL-27

BL-26

BL-25

BL-24

BL-23

BL-22

BL-21

BL-20

BL-19

BL-18

BL-17

BL-16

BL-15

BL-14

BL-13

BL-12

BL-11

BL-10

BL-9

BL-8

BL-7

BL-6

BL-5

BL-4

BL-3

BL-2

BL-1

PARKING DEMONSTRATION PLAN

Number of Unit (A11): 27.5
Total Parking Spaces provided (Street 6): 29
Parking Rate: 1.05

PROJECT No. P-1977
March 26, 2024
DWG. No. - 23:1
54 JARDIN DRIVE - UNIT 1B, CONCORD ONTARIO L4K 3P3
TEL: (905)669-4055 FAX: (905)669-0997 design@klmplanning.com
Planning • Design • Development