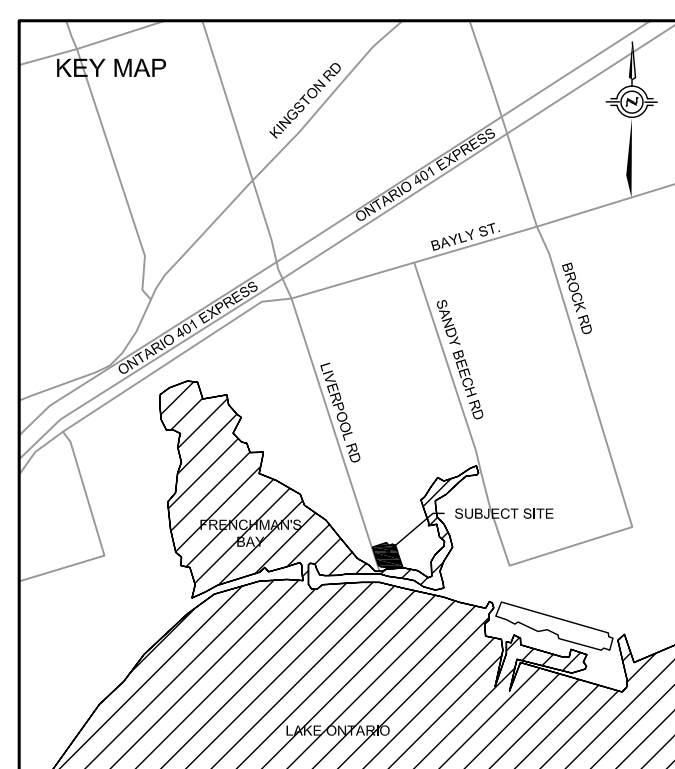


591 Liverpool Road Development - Project Statistics				
	GFA (sq.m)		Units	
	TH	MU	TH	MU
1st	1809	1734	31	17
2nd	1963	1173		23
3rd	1767	1875		23
4th	856	1875		22
5th		1696		21
6th		1696		14
7th		861		14
8th		861		11
9th		817		11
10th		817		7
11th		560		7
12th		560		7
SUBTOTAL	6395	14525	31	170
TOTAL GFA / UNITS	20920		201	
COMMERCIAL (TH)	250	<i>Included in 1st FL TH Area</i>		
SITE AREA (sq.m)	11200			
FSI	1.87			
DENSITY (u/ha)	179			
PARKING STATS				
	Units/GFA	Proposed Rate	Proposed	Required
Condominium Apartment Units (mid-rise building) Res.	153 Units	1.25 spaces/unit	192	192
Townhouses (mid-rise building) Residential	17 Units	2.0 spaces/unit	34	34
Townhouses (Street) Residential	22 Units	2.0 spaces/unit	44	44
Live-Work Units Residential	9 units	2.0 spaces/unit	18	18
Condominium & TH (Visitor)	192 Units	0.25 spaces/unit	48	48
Live-Work Units (Visitor)	250 m2	4.5 spaces/100m2	12	12
TOTAL PARKING			348	348

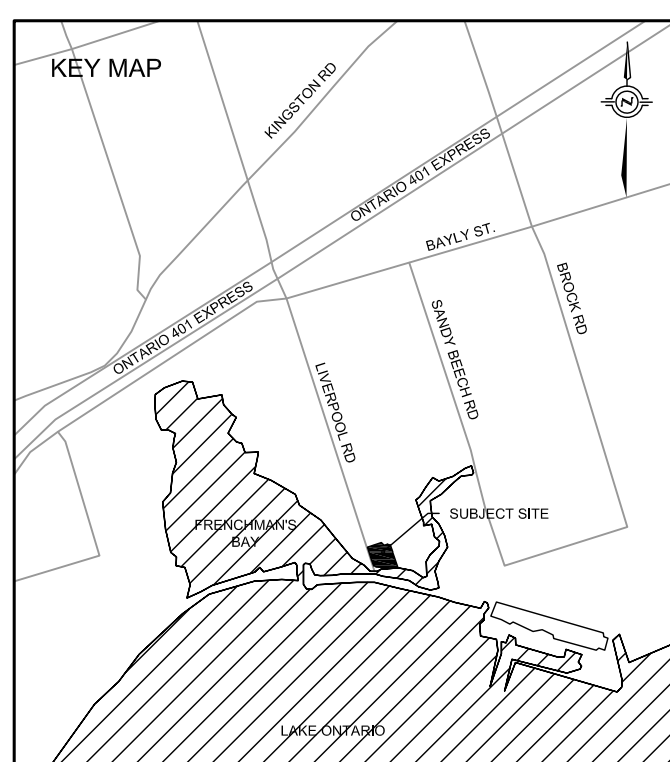


591 LIVERPOOL RD., PICKERING, ONTARIO
 PART 1 - PLAN SHOWING TOPOGRAPHY OF PART OF LOT 22 RANGE 3,
 BROKEN FRONT CONCESSION
 (GEOGRAPHIC TOWNSHIP OF PICKERING)
 NOW IN THE CITY OF PICKERING REGIONAL MUNICIPALITY OF DURHAM

CONCEPTUAL GROUND FLOOR SITE PLAN

Teple Architects INC
 5 CAMDEN STREET, TORONTO, ONTARIO CANADA M5V 1V2

REVISIONS		CLIENT:
No.	Description	PICKERING HARBOUR COMPANY LTD.
8		
7		
6		
5		
4		
3		
2		
1	REVISED SUBMISSION PER COMMENTS RECEIVED	6/6/2021
PLANNER:		THE BIGLIERI GROUP LTD. <small>Planning Development Project Management Urban Design</small>
DESIGNED BY: TD		
DATE:	June 6 th , 2021	DRAWING No.:
SCALE:	1:300	A01



591 LIVERPOOL RD., PICKERING, ONTARIO
 PART 1 - PLAN SHOWING TOPOGRAPHY OF PART OF LOT 22 RANGE 3,
 BROKEN FRONT CONCESSION
 (GEOGRAPHIC TOWNSHIP OF PICKERING)
 NOW IN THE CITY OF PICKERING REGIONAL MUNICIPALITY OF DURHAM

LEVEL 4 PLAN (TYPICAL)

Teeple Architects INC

5 CAMDEN STREET, TORONTO, ONTARIO CANADA M5V 1V2

REVISIONS	
8	
7	
6	
5	
4	
3	
2	
1	REVISED SUBMISSION PER COMMENTS RECEIVED
No.	Description
	Date
	6/6/2021
DATE: June 6 th , 2021	
SCALE: 1:300	
DESIGNED BY: TD	

CLIENT:
PICKERING HARBOUR COMPANY LTD.

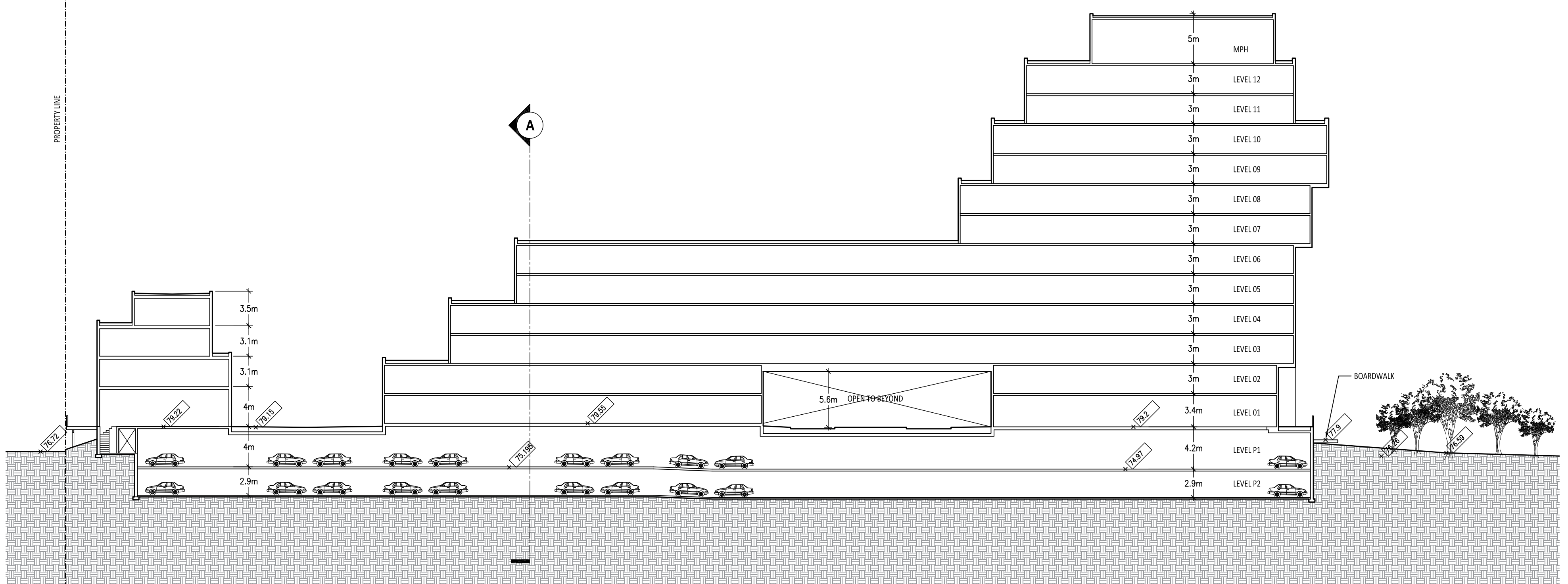
PLANNER:

THE BIGLIERI GROUP LTD.
 Planning | Development | Project Management | Urban Design

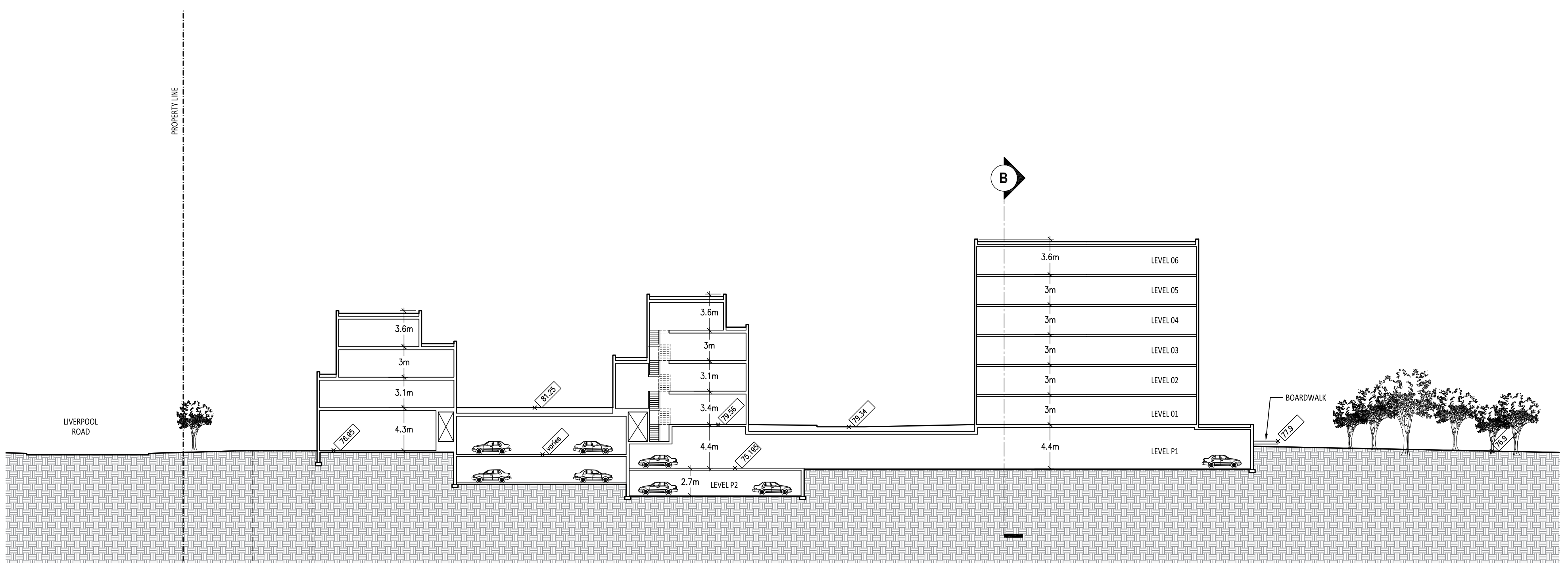
DRAWING No.: **A03**



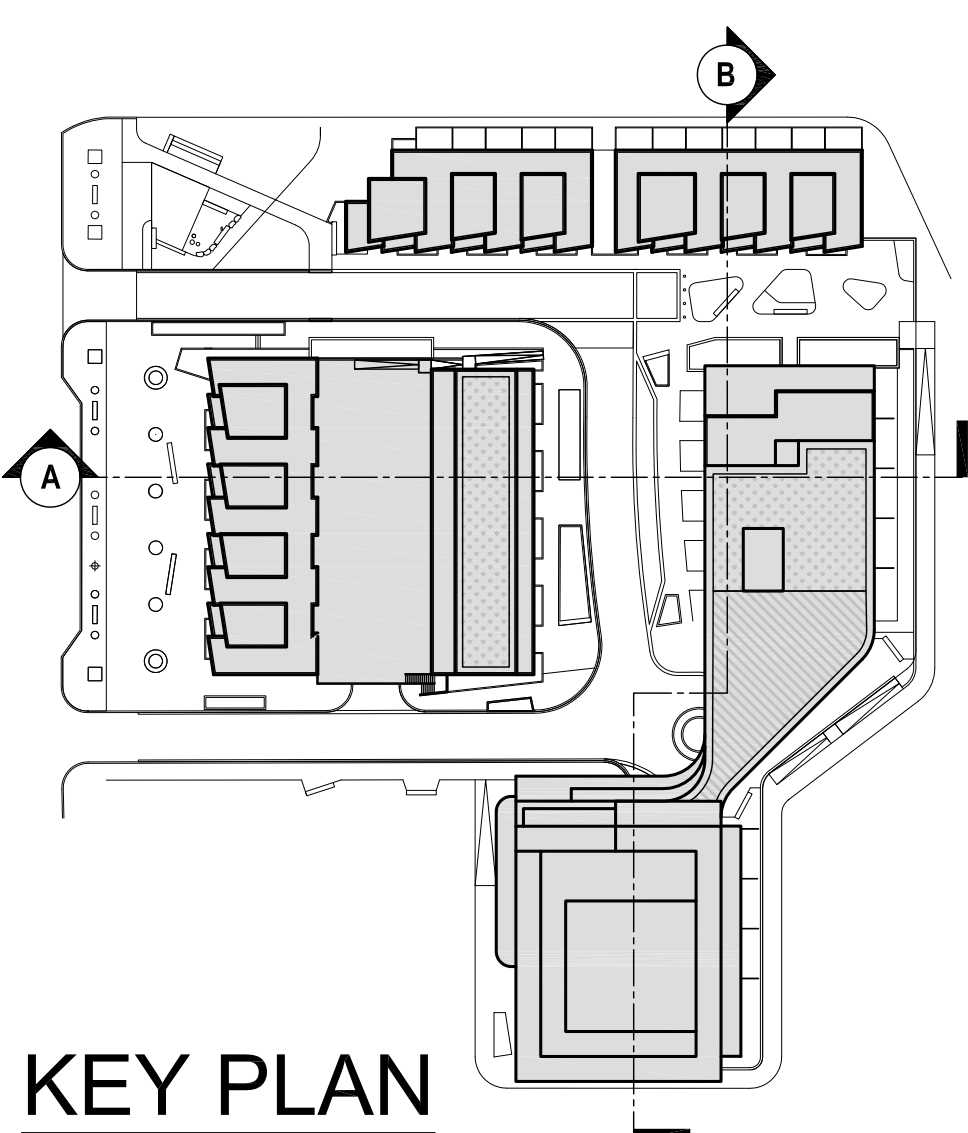
LIVERPOOL RD. ELEVATION



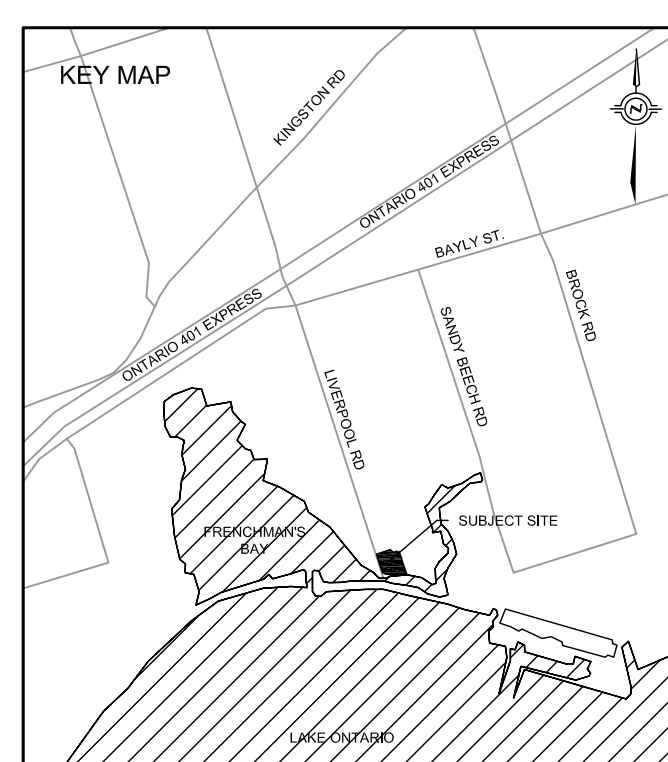
SITE SECTION 'B'



SITE SECTION 'A'



KEY PLAN



591 LIVERPOOL RD., PICKERING, ONTARIO
 PART 1 - PLAN SHOWING TOPOGRAPHY OF PART OF LOT 22 RANGE 3,
 BROKEN FRONT CONCESSION
 (GEOGRAPHIC TOWNSHIP OF PICKERING)
 NOW IN THE CITY OF PICKERING REGIONAL MUNICIPALITY OF DURHAM

SITE SECTIONS & ELEVATION

Teeple Architects INC
 5 CAMDEN STREET, TORONTO, ONTARIO CANADA M5V 1V2

REVISIONS	
8	
7	
6	
5	
4	
3	
2	
1	REVISED SUBMISSION PER COMMENTS RECEIVED 6/6/2021
No.	Description Date

CLIENT:
PICKERING HARBOUR COMPANY LTD.

PLANNER:

THE BIGLIERI GROUP LTD.
 Planning | Development | Project Management | Urban Design

DATE: June 6th, 2021
 DRAWING No.: A04

DESIGNED BY: TD
 SCALE: 1:300