

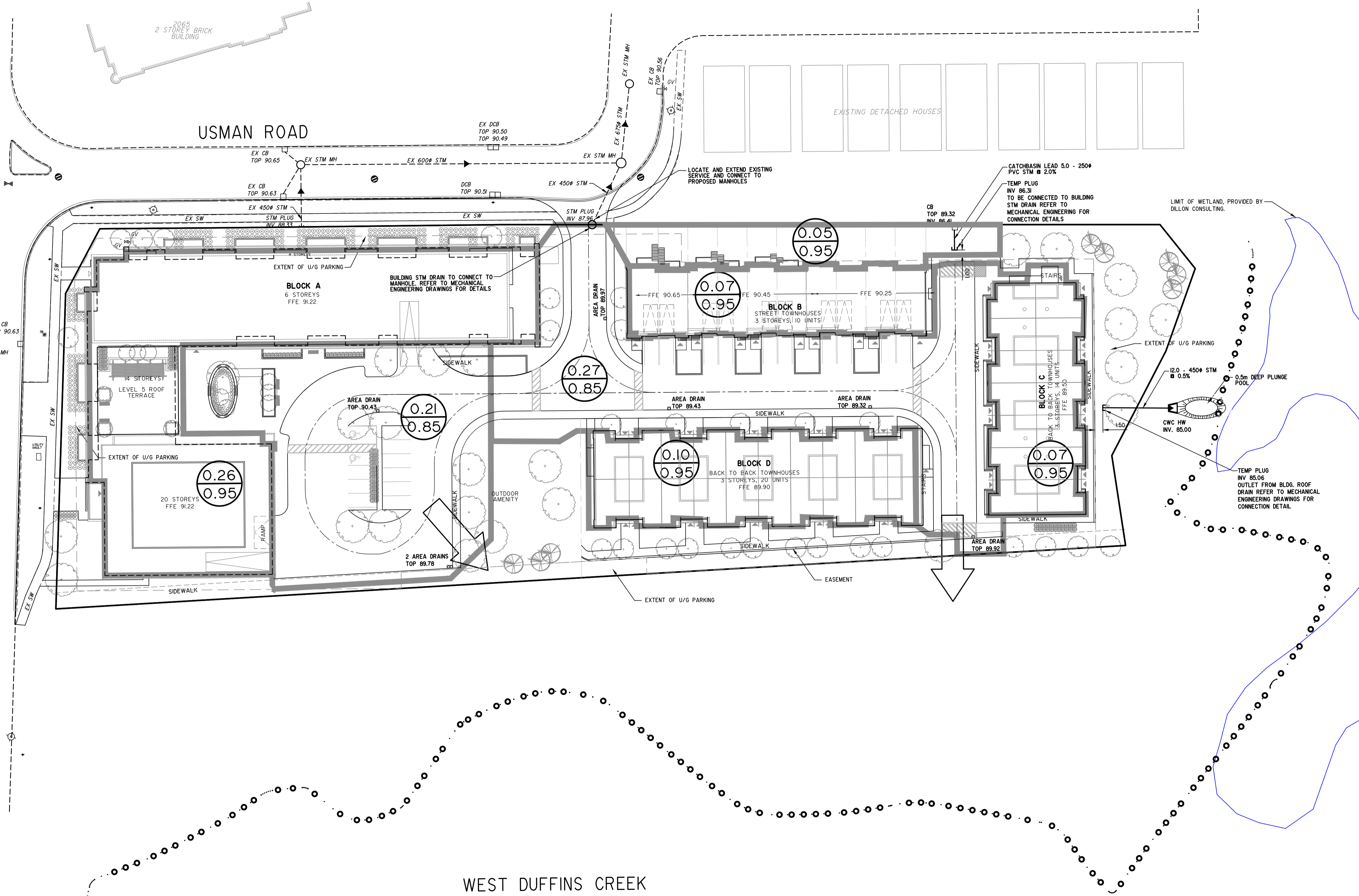


2065
2 STOREY BRICK
BUILDING

USMAN ROAD

BROCK ROAD

EXISTING DETACHED HOUSES



KEYMAP N.T.S.

LEGEND:

- STORM MANHOLE
- CATCHBASIN MANHOLE
- CATCHBASIN
- DOUBLE CATCHBASIN
- PROPOSED DRIVEWAY
- AREA IN HECTARES
- RUNOFF COEFFICIENT
- STORM DRAINAGE BOUNDARY
- OVERLAND FLOW ROUTE
- REGIONAL FLOODLINE

APPROVED BY: _____ P.ENG.
 ENGINEERING SERVICES DEPARTMENT
 APPROVAL TO WORKS REQUIRED BY THE CITY OF PICKERING AND AS DEFINED IN THE SUBDIVISION AGREEMENT. THE CITY IS RELYING ON THE TECHNICAL SKILLS AND ABILITY OF THE P.ENG. SEALING AND SIGNING THIS DRAWING.

APPROVED
 APPROVAL OF THE REGIONAL WORKS DEPT. FOR THE PURPOSES DESCRIBED IN THE APPLICABLE REGIONAL SUBDIVISION OR SERVICING AGREEMENT. THE REGION IS RELYING ON THE TECHNICAL SKILL AND ABILITY OF THE P. ENG. SEALING AND SIGNING THE DRAWINGS.

BENCHMARK:
 CITY OF PICKERING, BENCHMARK No. 2-035
 ELEVATION 85.465m

NOTE:
 ALL DIMENSIONS AND ELEVATIONS IN METRES UNLESS NOTED OTHERWISE. ALL PIPE SIZES IN MILLIMETRES. SEE INDEX DRAWING FOR GENERAL NOTES AND PROJECT SPECIFICATIONS.

No.	REVISIONS TO DRAWING	BY	DATE	APPR.
2.	ISSUED FOR ZBA 2ND SUBMISSION	B.J.L.	11/10/2022	
1.	ISSUED FOR ZBA 1ST SUBMISSION	K.D.	3/04/2021	

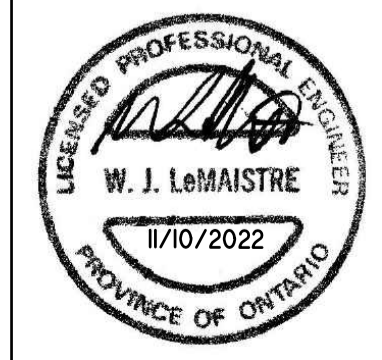
ALL PREVIOUS ISSUES OF THIS DRAWING ARE SUPERSEDED

CLIENT
 2055 BROCK ROAD DEVELOPMENT

MUNICIPALITY
 CITY OF PICKERING
 REGION OF DURHAM

PROJECT TITLE
 BROCK ROAD DUFFINS FOREST INC.

SHEET TITLE
 STORM POST SERVICING
 DRAINAGE PLAN



DESIGNED	KD	DRAWN	CK	CHECKED	W.J.L.
SCALE	1:400		DATE	OCTOBER 2022	
PROJECT NUMBER	19:411		DWG. NUMBER	POST	