

GENERAL EROSION & SEDIMENTATION CONTROL NOTES:

- PRIOR TO COMMENCEMENT OF ANY ON-SITE WORK/TOPSOIL STRIPPING, EROSION & SEDIMENT CONTROL (ESC) MEASURES, AS PER APPROVED EROSION & SEDIMENTATION CONTROL PLAN, MUST BE INSTALLED TO PREVENT SURFACE RUNOFF FROM LEAVING THE SITE "UNTREATED". ALL ESC MEASURES ARE TO BE MAINTAINED UNTIL THE SITE HAS BEEN STABILIZED.
- THE CONTRACTOR SHALL BE RESPONSIBLE FOR THE PROPER INSTALLATION, MAINTENANCE AND REMOVAL OF ALL TEMPORARY EROSION AND SEDIMENT CONTROL MEASURES DURING CONSTRUCTION, AS DIRECTED BY THE ENGINEER OR THE CITY OF PICKERING.
- SEDIMENT CONTROL FENCE TO USE GEOTEXTILE WITH WEAVE DENSITY OF 270R TERRAFIX OR EQUIVALENT.
- ALL EXPOSED SOILS SHALL BE IMMEDIATELY STABILIZED WITH A SEED AND MULCH APPLICATION AS DIRECTED BY THE ENGINEER OR CITY OF PICKERING.
- CHECK DAMS ARE TO BE USED IN ANY TEMPORARY DRAINAGE SWALES REQUIRED DURING THE CONSTRUCTION PERIOD.
- ADDITIONAL EROSION AND SEDIMENT CONTROL MEASURES MAY BE REQUIRED AND SHALL BE DETERMINED BY THE ENGINEER OR THE CITY OF PICKERING.
- ALL SWALES ARE TO BE STABILIZED PRIOR TO USE.
- INSPECTION OF THE PROPOSED EROSION AND SEDIMENT CONTROL MEASURES WILL OCCUR ON A WEEKLY BASIS, AFTER RAINFALL EVENTS EXCEEDING 10mm OR AFTER RAPID SNOW MELT EVENTS AND DAILY DURING EXTENDED RAIN OR SNOW MELT PERIODS. THE SILT CONTROL FENCE MUST BE INSPECTED FOR RIPS OR TEARS, BROKEN STAKES, BLOW OUTS AND ACCUMULATION OF SEDIMENT. THE SILT CONTROL FENCE MUST BE FIXED AND/OR REPLACED IMMEDIATELY WHEN DAMAGED. ACCUMULATED SEDIMENT MUST BE REMOVED FROM THE SILT CONTROL FENCE WHEN ACCUMULATION REACHES 50% OF THE HEIGHT OF THE FENCE.
- ROCK CHECK DAMS ARE TO BE CLEANED OF ALL ACCUMULATED SEDIMENT AS SOON AS SEDIMENT HAS ACCUMULATED TO A DEPTH GREATER THAN 50% OF ALL THE UPSTREAM CHECK DAMS.
- CLEANING AND REPAIRS OF MUD MATS AND ANY OTHER TEMPORARY SEDIMENT CONTROL MEASURES SHALL BE DONE AS NECESSARY THROUGH REGULAR INSPECTION OR AS DIRECTED BY THE ENGINEER OR CITY OF PICKERING. ALL DAMAGED ESC MEASURES SHALL BE REPAIRED AND/OR REPLACED WITHIN 48 HOURS OF THE INSPECTION.
- MATERIALS TO REPAIR DAMAGED ESC MEASURES MUST BE KEPT ON-SITE AT ALL TIMES.
- THE ESC STRATEGIES ON THESE PLANS ARE NOT STATIC AND MAY NEED TO BE UPGRADED/ AMENDED AS SITE CONDITIONS CHANGE TO PREVENT SEDIMENT RELEASES. FAILED ESC MEASURES MUST BE REPAIRED IMMEDIATELY.
- NO CONSTRUCTION ACTIVITY OR MACHINERY SHALL INTRUDE BEYOND THE SILT CONTROL FENCE OR LIMIT OF DEVELOPMENT. ALL CONSTRUCTION VEHICLES SHALL LEAVE THE SITE AT DESIGNATED LOCATIONS AS SHOWN ON THE PLANS. ALL MATERIALS AND EQUIPMENT SHALL BE STORED ON SITE IN A DESIGNATED AREA. NO MATERIALS OR EQUIPMENT SHALL BE STORED ON THE MUNICIPAL RIGHT OF WAY. NO CONSTRUCTION VEHICLES WILL PARK ON MUNICIPAL ROADS.
- SERVICING OF CONSTRUCTION EQUIPMENT ON SITE IS PROHIBITED.
- THE CONTRACTOR MUST CLEAN ADJACENT ROADS ON A REGULAR BASIS. THE ROAD SHALL BE, AT A MINIMUM SCRAPED DAILY AND FLUSHED (IF NECESSARY) ON FRIDAY EVENINGS OR SATURDAY MORNINGS.
- DUST CONTROL TO BE REVIEWED DAILY. WATER TRUCK OR CALCIUM CHLORIDE IS TO BE PROVIDED ON-SITE AND HAUL ROADS/ WORKING AREAS ARE TO BE SPRAYED WITH WATER AS REQUIRED TO ENSURE THAT DUST IS CONTROLLED ON-SITE.
- AT THE END OF CONSTRUCTION PERIOD, ACCUMULATED SEDIMENT TO BE REMOVED OFF SITE PRIOR TO THE REMOVAL OF THE SILT FENCE.
- ALL LITTER AND DEBRIS SHALL BE MONITORED AND DISPOSED OF DAILY OR AS NECESSARY THROUGH REGULAR INSPECTION.
- ALL TOPSOIL STOCKPILES SHALL BE SURROUNDED WITH SEDIMENT CONTROL FENCE AND STABILIZED WITH SEED MIX AS PER THIS DRAWING.
- DISTURBED AREAS ARE TO BE MINIMIZED TO THE EXTENT POSSIBLE AND STABILIZED AS THE WORK PROGRESSES. ANY AREA EXPOSED FOR MORE THAN 30 DAYS WILL BE STABILIZED.

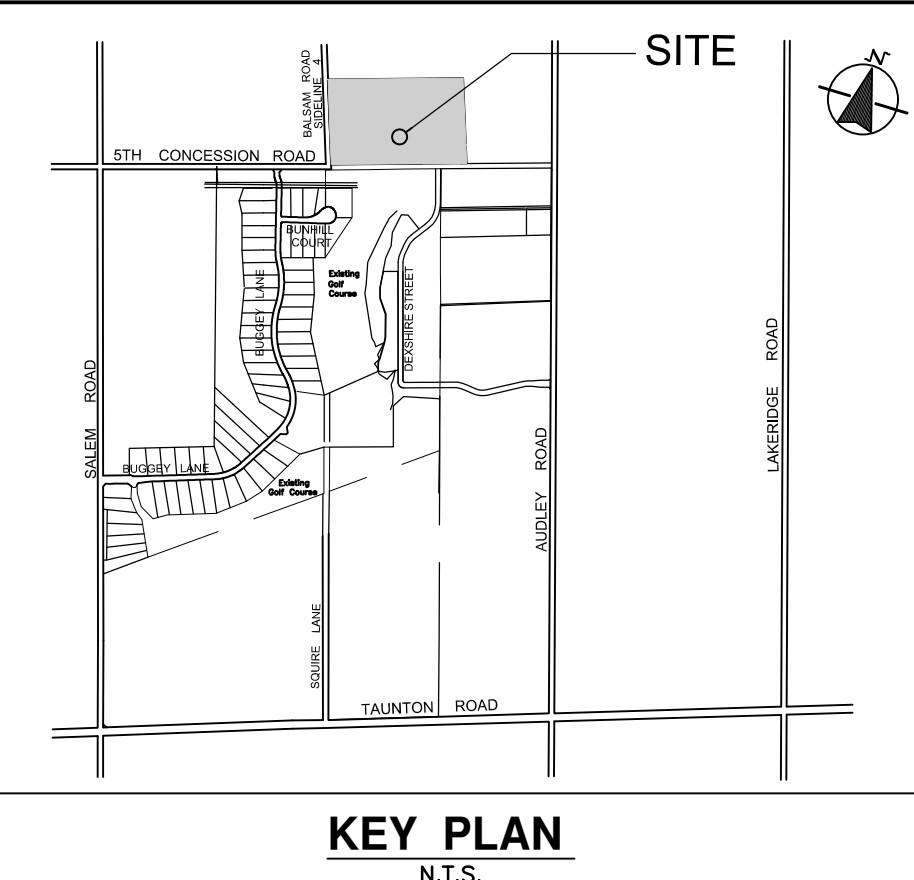
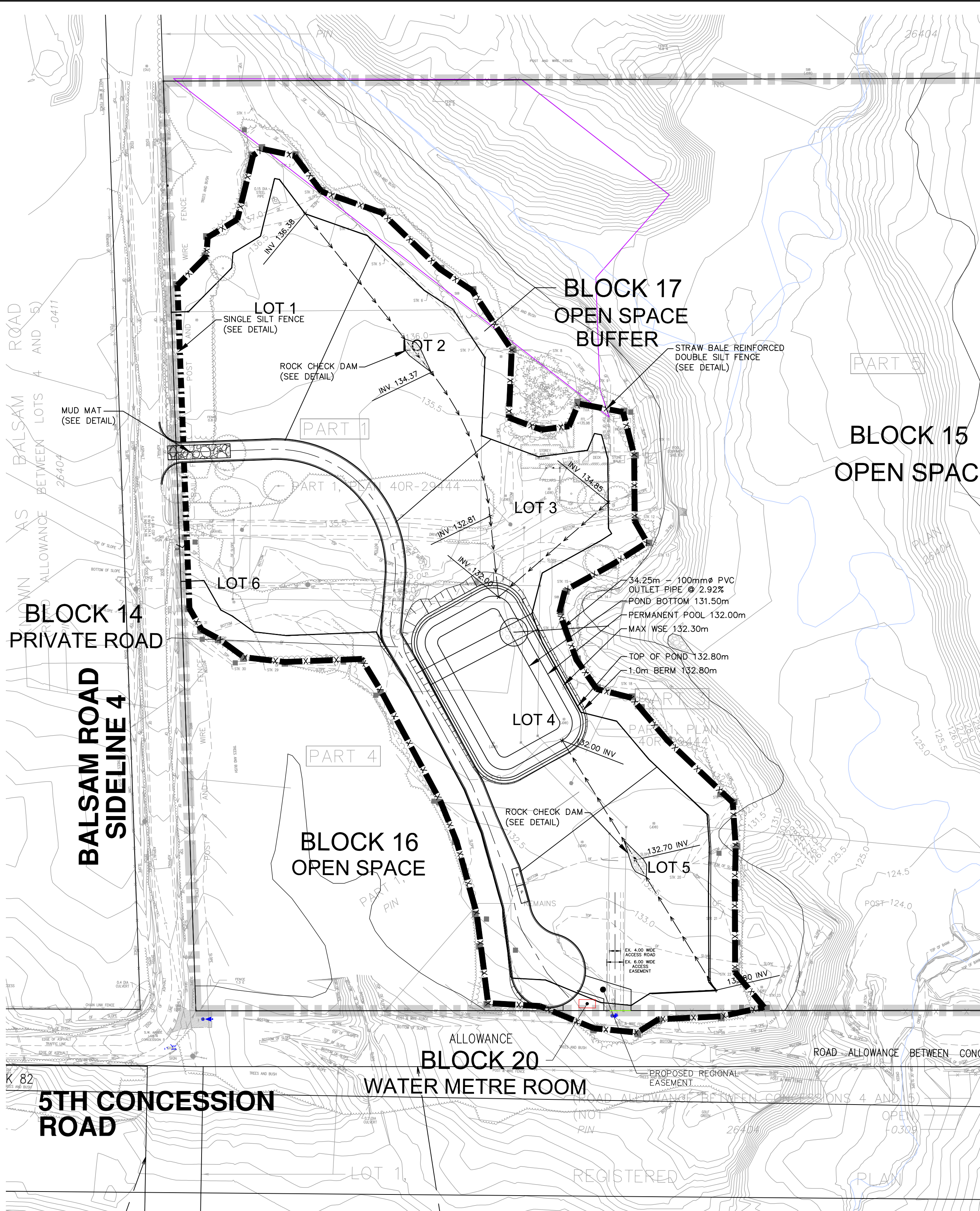
PERMIT CONDITIONS:

ALL PERMIT HOLDERS SHALL:

- NOTIFY THE DIRECTOR OR HIS/HER DESIGNATE A MINIMUM OF TWO BUSINESS DAYS PRIOR TO THE COMMENCEMENT OR RECOMMENCEMENT OF ANY LAND DISTURBING ACTIVITY;
- OBTAIN PERMISSION IN WRITING FROM THE DIRECTOR OR HIS/HER DESIGNATE PRIOR TO MODIFYING ANY ELEMENT OF THE EROSION AND SEDIMENT CONTROL PLAN;
- INSTALL ALL CONTROL MEASURES AS IDENTIFIED IN THE APPROVED EROSION AND SEDIMENT CONTROL PLAN;
- MAINTAIN ALL ROAD DRAINAGE SYSTEMS, STORMWATER DRAINAGE SYSTEMS, CONTROL MEASURES AND OTHER FACILITIES IDENTIFIED IN THE EROSION AND SEDIMENT CONTROL PLAN;
- PROMPTLY REPAIR ANY SILTATION OR EROSION DAMAGE TO ADJOINING SURFACES AND DRAINAGE WAYS RESULTING FROM LAND DEVELOPMENT OR DISTURBING ACTIVITIES;
- INSPECT THE SEDIMENTATION CONTROL MEASURES AT LEAST ONCE PER WEEK AND AFTER EACH RAINFALL OF AT LEAST ONE CENTIMETRE AND MAKE NEEDED REPAIRS;
- ALLOW CITY OFFICERS OR AGENTS OF THE CITY TO ENTER THE SITE FOR THE PURPOSE OF INSPECTING FOR COMPLIANCE WITH THE EROSION AND SEDIMENT CONTROL PLAN OR FOR PERFORMING ANY WORK NECESSARY TO BRING THE SITE INTO COMPLIANCE WITH THE EROSION AND SEDIMENT CONTROL PLAN;
- MAINTAIN A COPY OF THE PERMIT ON THE SITE.
- NOTIFY ALL SUB CONTRACTORS AND SUPPLIERS OF APPROVED ACCESS ROUTES TO THE SITE AND ENSURE COMPLIANCE WITH THESE INSTRUCTIONS;
- MAINTAIN ALL ROADS IN SAME OR BETTER CONDITION THAN EXISTING PRIOR TO THE COMMENCEMENT OF THE WORK AND KEEP ALL ROADS FREE FROM ANY MATERIALS OR EQUIPMENT ARISING FROM THE WORK SET OUT IN THE PERMIT;
- ENSURE THAT NO CONSTRUCTION MACHINERY IS OPERATED IN CONTRAVENTION OF BY-LAW NUMBER 3821, AS AMENDED, (NOISE BY-LAW) OR ANY SUCCESSOR THERETO.
- AN AFTER HOURS CONTACT NUMBER IS TO BE VISIBLY POSTED ON-SITE FOR EMERGENCIES. ALL CONCERNS SHOULD BE DIRECTED TO:
CANDEVCON LIMITED: MIRKO FAVIT 289-315-3680
LAND OWNER: JOHN SMITH 905-666-6666

THE CITY SHALL:

- UPON THE FAILURE BY THE PERMIT HOLDER TO COMPLETE ALL OR PART OF THE WORKS IN THE TIME STIPULATED IN THE EROSION AND SEDIMENT CONTROL PLAN, THE CITY MAY DRAW THE APPROPRIATE AMOUNT FROM THE SECURITIES POSTED AND USE THE FUNDS TO ARRANGE FOR THE COMPLETION OF THE SAID WORKS, OR ANY PART THEREOF;
- UPON FAILURE BY THE PERMIT HOLDER TO INSTALL, REPAIR OR MAINTAIN A SPECIFIC PART OF THE WORKS AS REQUESTED BY THE CITY, AND IN THE TIME REQUESTED, THE CITY MAY AT ANY TIME AUTHORIZE THE USE OF ALL OR PART OF THE SECURITIES TO PAY THE COST OF ANY PART OF THE WORKS IT MAY IN ITS OR THEIR ABSOLUTE DISCRETION DEEM NECESSARY.
- IN THE CASE OF EMERGENCY REPAIRS OR CLEAN-UP, THE CITY MAY UNDERTAKE THE NECESSARY WORKS AT THE EXPENSE OF THE PERMIT HOLDER AND REIMBURSE ITSELF OUT OF SECURITIES POSTED BY THE APPLICANT.



NOTES:

- ALL MEASUREMENTS IN METRES, PIPE SIZES IN MILLIMETRES, UNLESS OTHERWISE SPECIFIED.

LEGEND

- EXISTING GROUND CONTOUR
- SILT FENCE
- STRAW BALE REINFORCED DOUBLE SILT FENCE
- TEMPORARY SWALE
- CONSTRUCTION ACCESS MUD MAT
- ROCK FLOW CHECK DAM
- SWALE INVERT
- CATCHBASIN BUFFER / SILTSACK
- RISER PIPE LOT DRAIN
- OVERLAND FLOW DIRECTION

TEMPORARY SEDIMENT CONTROL POND DESIGN DETAILS

DRAINAGE AREA TO POND	= 2.81ha
PERMANENT POOL VOLUME REQUIRED (185m ³ /ha x 3.56ha)	= 520m ³
PERMANENT POOL VOLUME PROVIDED	= 825m ³
ACTIVE STORAGE VOLUME REQUIRED (125m ³ /ha x 3.56ha)	= 351m ³
ACTIVE STORAGE VOLUME PROVIDED	= 630m ³
BOTTOM OF POND ELEVATION	= 131.50m
PERMANENT POOL ELEVATION	= 132.00m
ACTIVE STORAGE ELEVATION	= 132.30m
TOP OF POND ELEVATION	= 132.50m
OUTFLOW RATE REQUIRED FOR MIN. 24hr DETENTION TIME	= 3.7L/s

REVISIONS

No.	BY	DATE	DESCRIPTION	APPROVED

THE CORPORATION OF THE CITY OF PICKERING
DEPARTMENT OF ENGINEERING SERVICES

FRISQUE LANDS

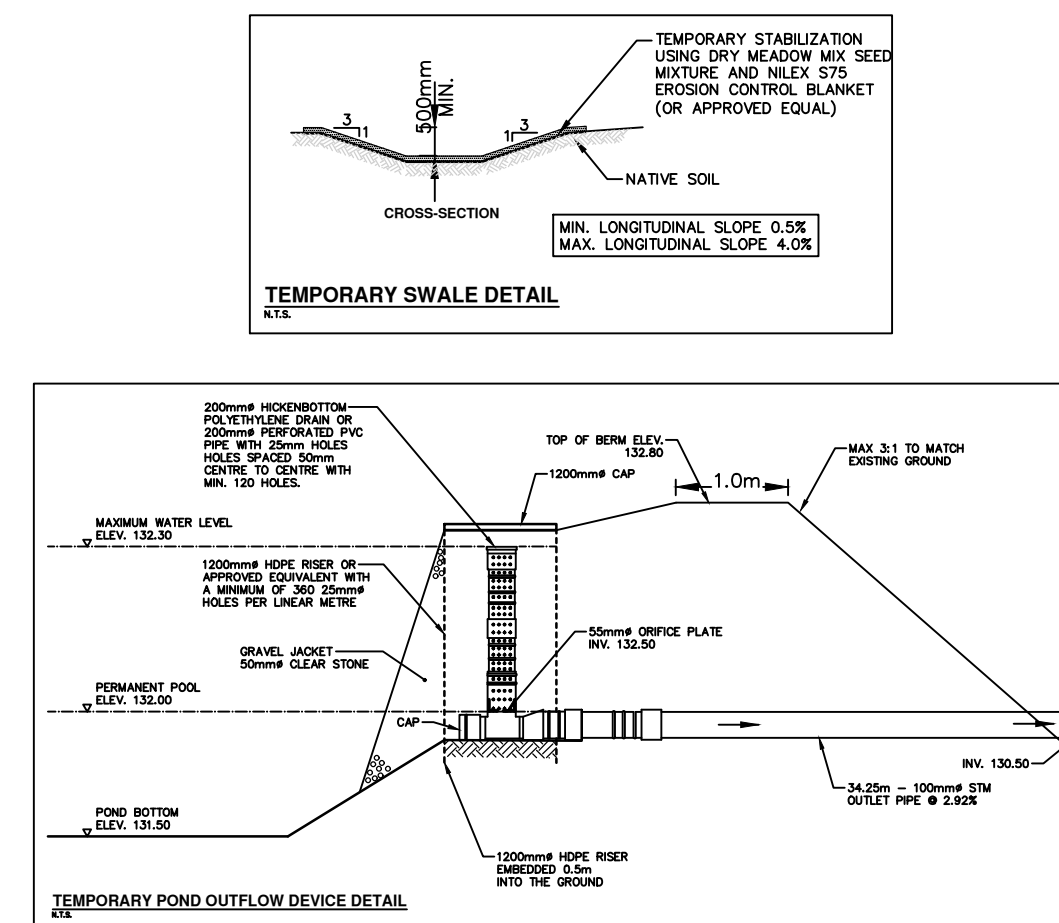
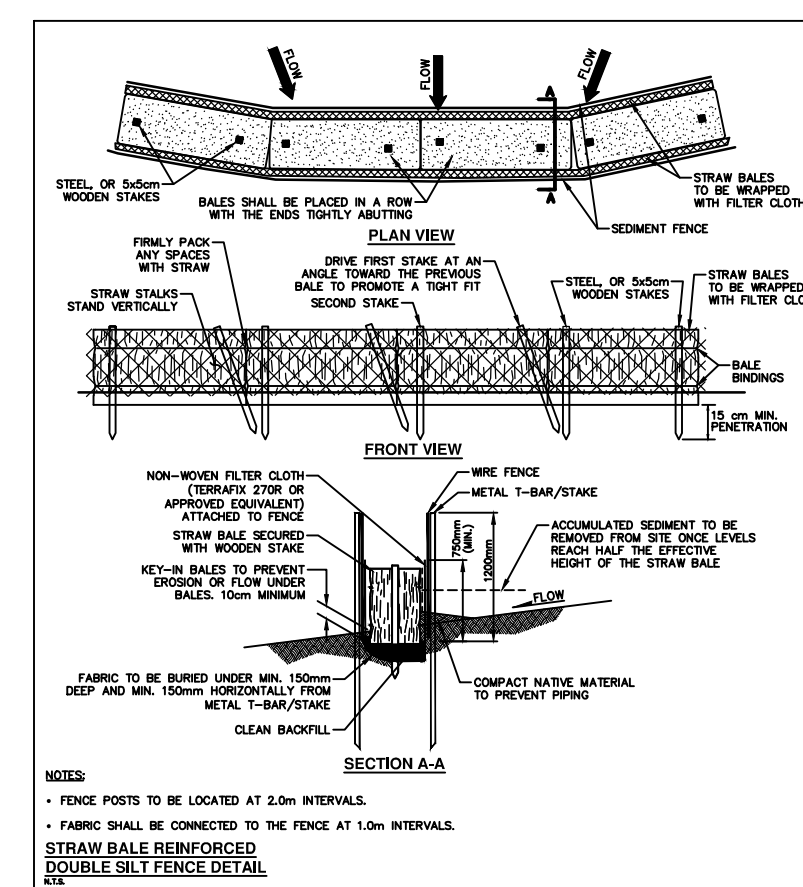
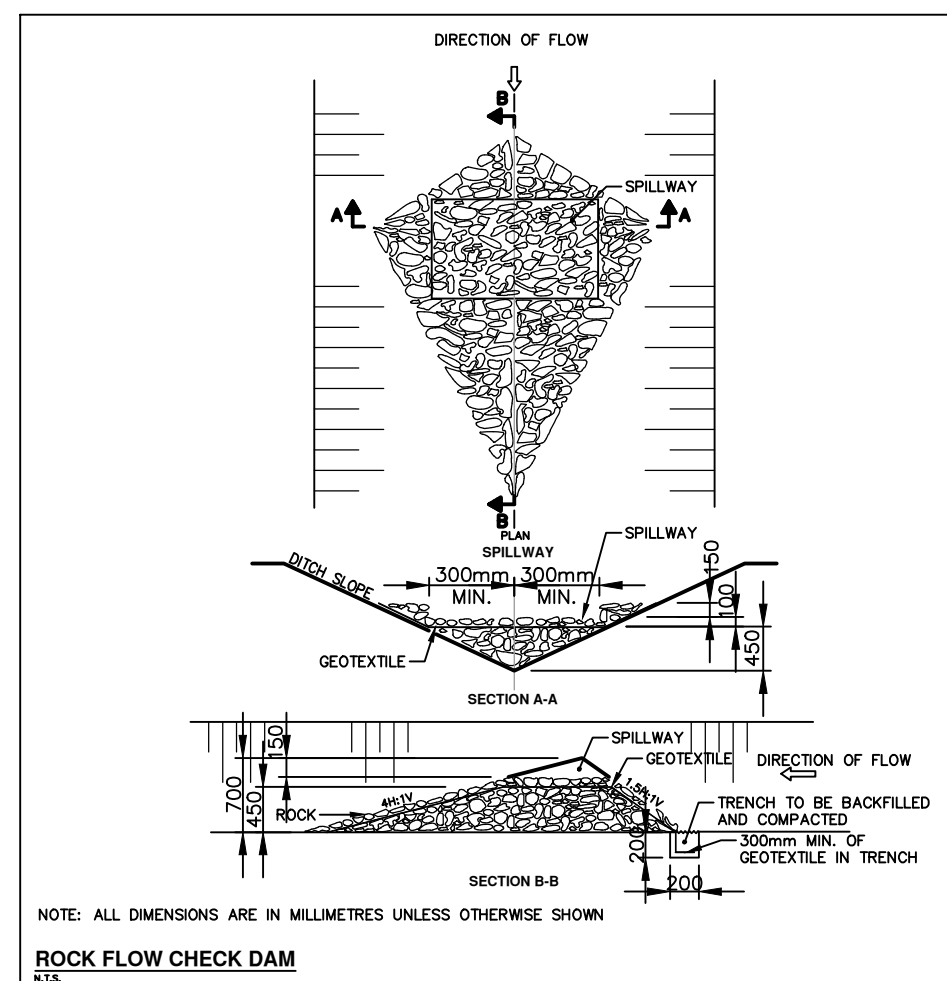
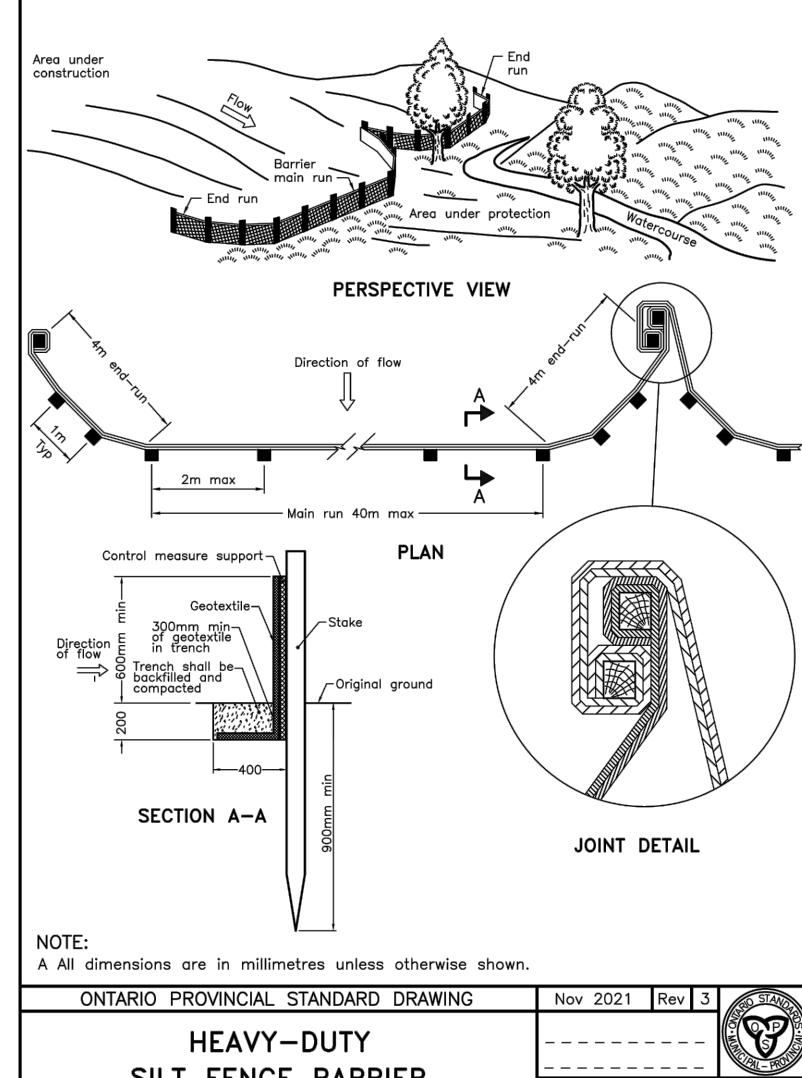
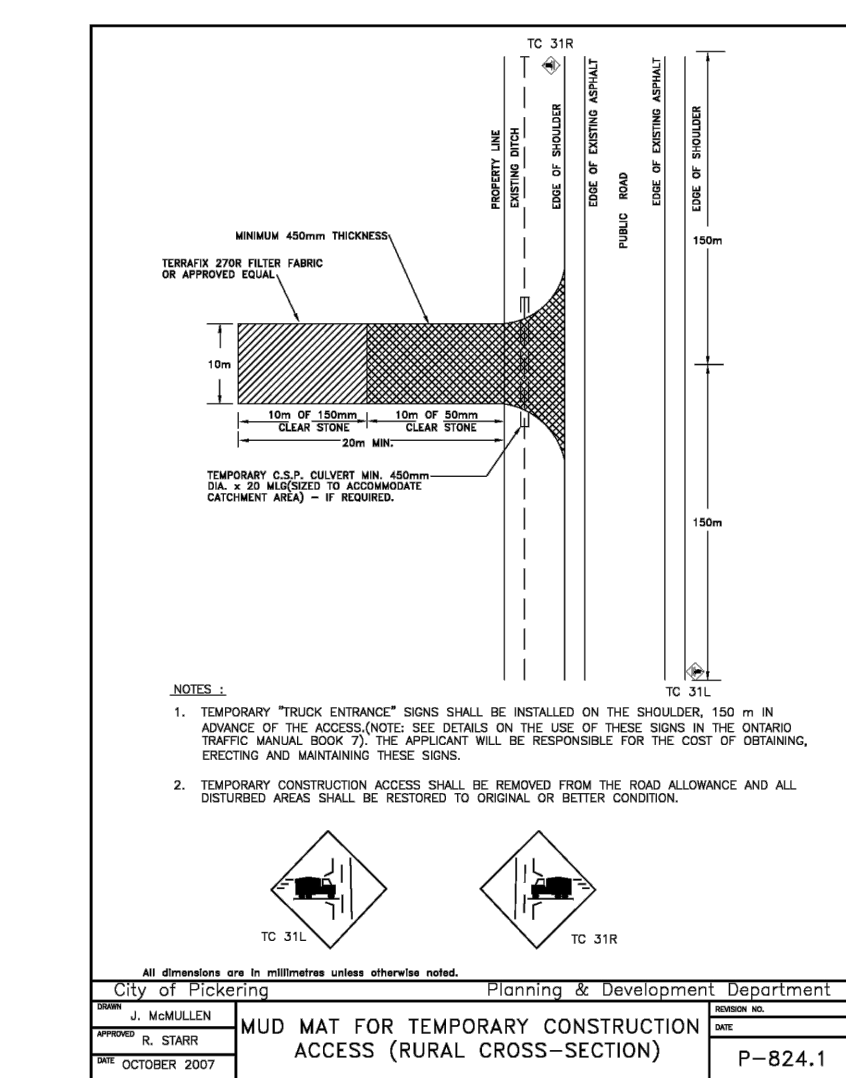
EROSION AND SEDIMENT CONTROL PLAN

WEST

CANDEVCON EAST LIMITED
CONSULTING ENGINEERS & PLANNERS

1600 STELLAR DRIVE, SUITE 402 WHITEBY, ONTARIO L1N 9B2
TEL (289) 315-3680 FAX (905) 794-0611

	SCALE : 1:1000	PROJECT No. E21007
	DRAWN BY : C.G.	DRAWING No.
	DESIGNED BY : A.K.	ERS1
	CHECKED BY : M.F.	REVISION DATE: Nov. 21, 2023



GENERAL EROSION & SEDIMENTATION CONTROL NOTES:

- PRIOR TO COMMENCEMENT OF ANY ON-SITE WORK/TOPSOIL STRIPPING, EROSION & SEDIMENT CONTROL (ESC) MEASURES, AS PER APPROVED EROSION & SEDIMENT CONTROL PLAN, MUST BE INSTALLED TO PREVENT SURFACE RUNOFF FROM LEAVING THE SITE "UNTREATED". ALL ESC MEASURES ARE TO BE MAINTAINED UNTIL THE SITE HAS BEEN STABILIZED.
- THE CONTRACTOR SHALL BE RESPONSIBLE FOR THE PROPER INSTALLATION, MAINTENANCE AND REMOVAL OF ALL TEMPORARY EROSION AND SEDIMENT CONTROL MEASURES DURING CONSTRUCTION, AS DIRECTED BY THE ENGINEER OR THE CITY OF PICKERING.
- SEDIMENT CONTROL FENCE TO USE GEOTEXTILE WITH WEAVE DENSITY OF 270R TERRAFIX OR EQUIVALENT.
- ALL EXPOSED SOILS SHALL BE IMMEDIATELY STABILIZED WITH A SEED AND MULCH APPLICATION AS DIRECTED BY THE ENGINEER OR CITY OF PICKERING.
- CHECK DAMS ARE TO BE USED IN ANY TEMPORARY DRAINAGE SWALES REQUIRED DURING THE CONSTRUCTION PERIOD.
- ADDITIONAL EROSION AND SEDIMENT CONTROL MEASURES MAY BE REQUIRED AND SHALL BE DETERMINED BY THE ENGINEER OR THE CITY OF PICKERING.
- ALL SWALES ARE TO BE STABILIZED PRIOR TO USE.
- INSPECTION OF THE PROPOSED EROSION AND SEDIMENT CONTROL MEASURES WILL OCCUR ON A WEEKLY BASIS, AFTER RAINFALL EVENTS EXCEEDING 10mm OR AFTER RAPID SNOW MELT EVENTS AND DAILY DURING EXTENDED RAIN OR SNOW MELT PERIODS. THE SILT CONTROL FENCE MUST BE INSPECTED FOR RIPS OR TEARS, BROKEN STAKES, BLOW OUTS AND ACCUMULATION OF SEDIMENT. THE SILT CONTROL FENCE MUST BE FIXED AND/OR REPLACED IMMEDIATELY WHEN DAMAGED. ACCUMULATED SEDIMENT MUST BE REMOVED FROM THE SILT CONTROL FENCE WHEN ACCUMULATION REACHES 50% OF THE HEIGHT OF THE FENCE.
- ROCK CHECK DAMS ARE TO BE CLEANED OF ALL ACCUMULATED SEDIMENT AS SOON AS SEDIMENT HAS ACCUMULATED TO A DEPTH GREATER THAN 50% OF ALL THE UPSTREAM CHECK DAMS.
- CLEANING AND REPAIRS OF MUD MATS AND ANY OTHER TEMPORARY SEDIMENT CONTROL MEASURES SHALL BE DONE AS NECESSARY THROUGH REGULAR INSPECTION OR AS DIRECTED BY THE ENGINEER OR CITY OF PICKERING. ALL DAMAGED ESC MEASURES SHALL BE REPAIRED AND/OR REPLACED WITHIN 48 HOURS OF THE INSPECTION.
- MATERIALS TO REPAIR DAMAGED ESC MEASURES MUST BE KEPT ON-SITE AT ALL TIMES.
- THE ESC STRATEGIES ON THESE PLANS ARE NOT STATIC AND MAY NEED TO BE UPGRADED/ AMENDED AS SITE CONDITIONS CHANGE TO PREVENT SEDIMENT RELEASES. FAILED ESC MEASURES MUST BE REPAIRED IMMEDIATELY.
- NO CONSTRUCTION ACTIVITY OR MACHINERY SHALL INTRUDE BEYOND THE SILT CONTROL FENCE OR LIMIT OF DEVELOPMENT. ALL CONSTRUCTION VEHICLES SHALL LEAVE THE SITE AT DESIGNATED LOCATIONS AS SHOWN ON THE PLANS. ALL MATERIALS AND EQUIPMENT SHALL BE STORED ON SITE IN A DESIGNATED AREA. NO MATERIALS OR EQUIPMENT SHALL BE STORED ON THE MUNICIPAL RIGHT OF WAY. NO CONSTRUCTION VEHICLES WILL PARK ON MUNICIPAL ROADS.
- SERVICING OF CONSTRUCTION EQUIPMENT ON SITE IS PROHIBITED.
- THE CONTRACTOR MUST CLEAN ADJACENT ROADS ON A REGULAR BASIS. THE ROAD SHALL BE, AT A MINIMUM SCRAPED DAILY AND FLUSHED (IF NECESSARY) ON FRIDAY EVENINGS OR SATURDAY MORNINGS.
- DUST CONTROL TO BE REVIEWED DAILY. WATER TRUCK OR CALCIUM CHLORIDE IS TO BE PROVIDED ON-SITE AND HAUL ROADS/ WORKING AREAS ARE TO BE SPRAYED WITH WATER AS REQUIRED TO ENSURE THAT DUST IS CONTROLLED ON-SITE.
- AT THE END OF CONSTRUCTION PERIOD, ACCUMULATED SEDIMENT TO BE REMOVED OFF SITE PRIOR TO THE REMOVAL OF THE SILT FENCE.
- ALL LITTER AND DEBRIS SHALL BE MONITORED AND DISPOSED OF DAILY OR AS NECESSARY THROUGH REGULAR INSPECTION.
- ALL TOPSOIL STOCKPILES SHALL BE SURROUNDED WITH SEDIMENT CONTROL FENCE AND STABILIZED WITH SEED MIX AS PER THIS DRAWING.
- DISTURBED AREAS ARE TO BE MINIMIZED TO THE EXTENT POSSIBLE AND STABILIZED AS THE WORK PROGRESSES. ANY AREA EXPOSED FOR MORE THAN 30 DAYS WILL BE STABILIZED.

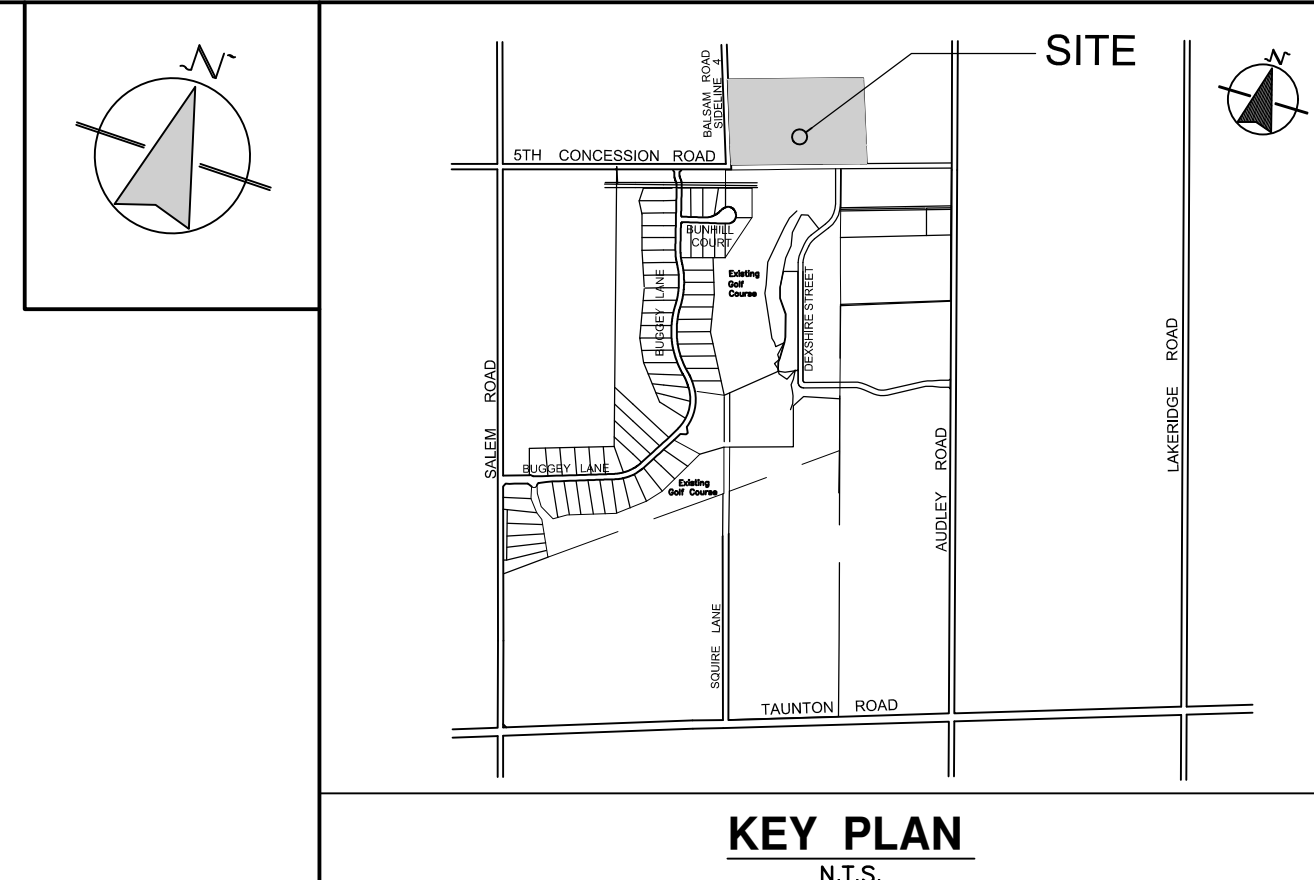
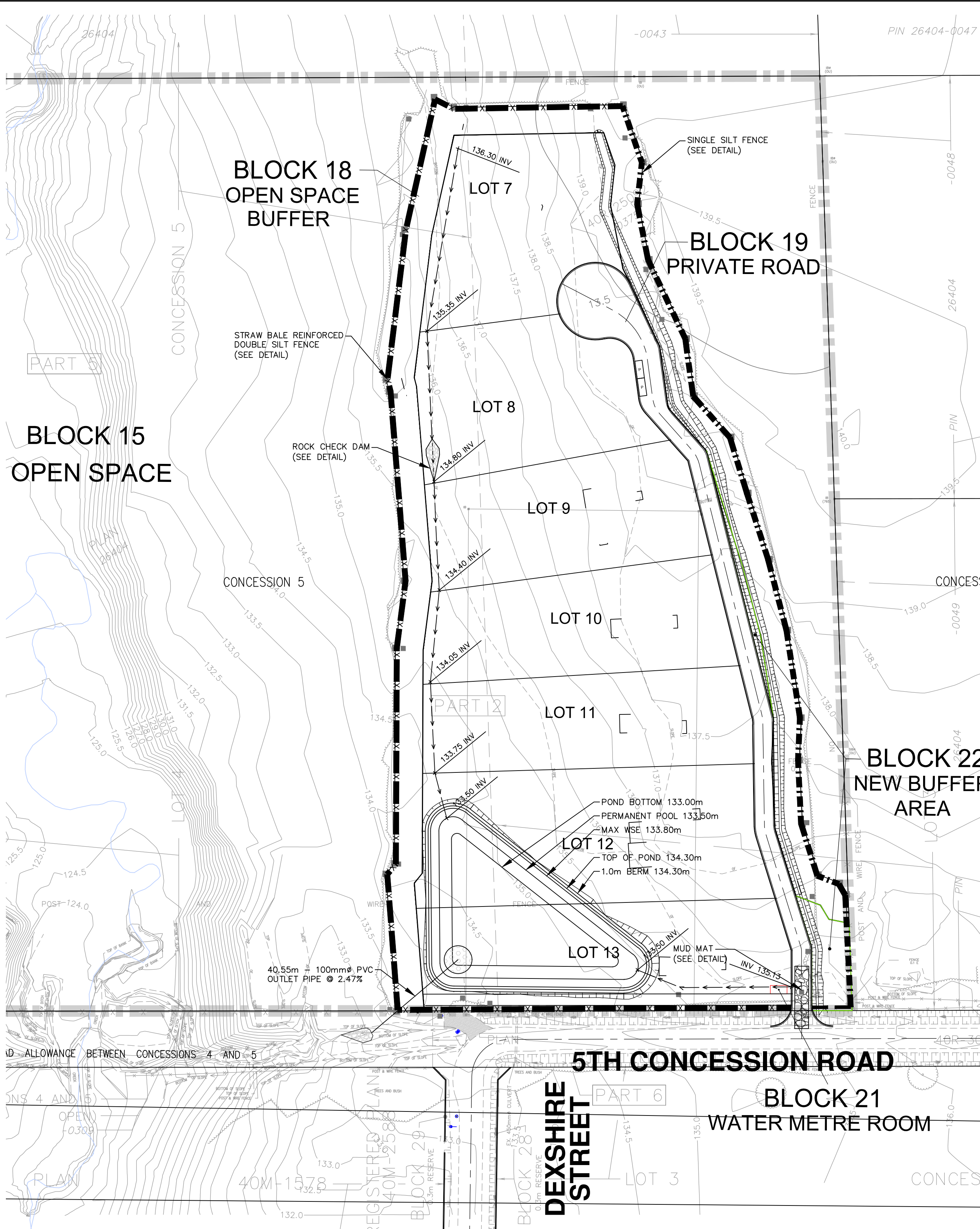
PERMIT CONDITIONS:

ALL PERMIT HOLDERS SHALL:

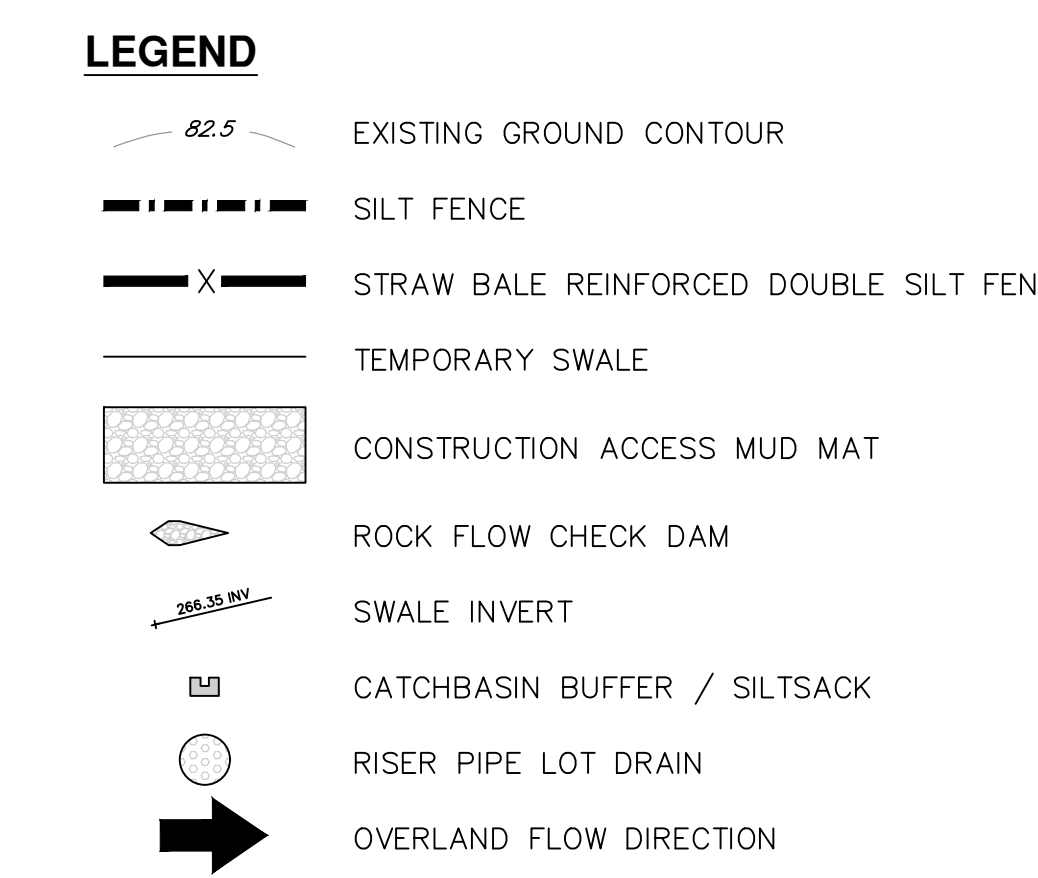
- NOTIFY THE DIRECTOR OR HIS/HER DESIGNATE A MINIMUM OF TWO BUSINESS DAYS PRIOR TO THE COMMENCEMENT OR RECOMMENCEMENT OF ANY LAND DISTURBING ACTIVITY;
- OBTAIN PERMISSION IN WRITING FROM THE DIRECTOR OR HIS/HER DESIGNATE PRIOR TO MODIFYING ANY ELEMENT OF THE EROSION AND SEDIMENT CONTROL PLAN;
- INSTALL ALL CONTROL MEASURES AS IDENTIFIED IN THE APPROVED EROSION AND SEDIMENT CONTROL PLAN;
- MAINTAIN ALL ROAD DRAINAGE SYSTEMS, STORMWATER DRAINAGE SYSTEMS, CONTROL MEASURES AND OTHER FACILITIES IDENTIFIED IN THE EROSION AND SEDIMENT CONTROL PLAN;
- PROMPTLY REPAIR ANY SILTATION OR EROSION DAMAGE TO ADJOINING SURFACES AND DRAINAGE WAYS RESULTING FROM LAND DEVELOPMENT OR DISTURBING ACTIVITIES;
- INSPECT THE SEDIMENTATION CONTROL MEASURES AT LEAST ONCE PER WEEK AND AFTER EACH RAINFALL OF AT LEAST ONE CENTIMETRE AND MAKE NEEDED REPAIRS;
- ALLOW CITY OFFICERS OR AGENTS OF THE CITY FOR THE PURPOSE OF INSPECTING FOR COMPLIANCE WITH THE EROSION AND SEDIMENT CONTROL PLAN OR FOR PERFORMING ANY WORK NECESSARY TO BRING THE SITE INTO COMPLIANCE WITH THE EROSION AND SEDIMENT CONTROL PLAN;
- MAINTAIN A COPY OF THE PERMIT ON THE SITE.
- NOTIFY ALL SUB CONTRACTORS AND SUPPLIERS OF APPROVED ACCESS ROUTES TO THE SITE AND ENSURE COMPLIANCE WITH THESE INSTRUCTIONS;
- MAINTAIN ALL ROADS IN SAME OR BETTER CONDITION THAN EXISTING PRIOR TO THE COMMENCEMENT OF THE WORK AND KEEP ALL ROADS FREE FROM ANY MATERIALS OR EQUIPMENT ARISING FROM THE WORK SET OUT IN THE PERMIT;
- ENSURE THAT NO CONSTRUCTION MACHINERY IS OPERATED IN CONTRAVENTION OF BY-LAW NUMBER 3821, AS AMENDED, (NOISE BY-LAW) OR ANY SUCCESSOR THERETO.
- AN AFTER HOURS CONTACT NUMBER IS TO BE VISIBLY POSTED ON-SITE FOR EMERGENCIES. ALL CONCERNS SHOULD BE DIRECTED TO:
CANDEVCON LIMITED: MIRKO FAVIT 289-315-3680
LAND OWNER: JOHN SMITH 905-666-6666

THE CITY SHALL:

- UPON THE FAILURE BY THE PERMIT HOLDER TO COMPLETE ALL OR PART OF THE WORKS IN THE TIME STIPULATED IN THE EROSION AND SEDIMENT CONTROL PLAN, THE CITY MAY DRAW THE APPROPRIATE AMOUNT FROM THE SECURITIES POSTED AND USE THE FUNDS TO ARRANGE FOR THE COMPLETION OF THE SAID WORKS, OR ANY PART THEREOF;
- UPON FAILURE BY THE PERMIT HOLDER TO INSTALL, REPAIR OR MAINTAIN A SPECIFIC PART OF THE WORKS AS REQUESTED BY THE CITY, AND IN THE TIME REQUESTED, THE CITY MAY AT ANY TIME AUTHORIZE THE USE OF ALL OR PART OF THE SECURITIES TO PAY THE COST OF ANY PART OF THE WORKS IT MAY IN ITS OR THEIR ABSOLUTE DISCRETION DEEM NECESSARY.
- IN THE CASE OF EMERGENCY REPAIRS OR CLEAN-UP, THE CITY MAY UNDERTAKE THE NECESSARY WORKS AT THE EXPENSE OF THE PERMIT HOLDER AND REIMBURSE ITSELF OUT OF SECURITIES POSTED BY THE APPLICANT.



NOTES:
1. ALL MEASUREMENTS IN METRES, PIPE SIZES IN MILLIMETRES, UNLESS OTHERWISE SPECIFIED.



TEMPORARY SEDIMENT CONTROL POND DESIGN DETAILS

DRAINAGE AREA TO POND	= 3.56ha
PERMANENT POOL VOLUME REQUIRED (185m ³ /ha x 3.56ha)	= 660m ³
PERMANENT POOL VOLUME PROVIDED	= 812m ³
ACTIVE STORAGE VOLUME REQUIRED (125m ³ /ha x 3.56ha)	= 445m ³
ACTIVE STORAGE VOLUME PROVIDED	= 675m ³
BOTTOM OF POND ELEVATION	= 133.00m
PERMANENT POOL ELEVATION	= 133.50m
ACTIVE STORAGE ELEVATION	= 133.80m
TOP OF POND ELEVATION	= 134.00m
OUTFLOW RATE REQUIRED FOR MIN. 24hr DETENTION TIME	= 7.0L/s

REVISIONS

No.	BY	DATE	DESCRIPTION	APPROVED

THE CORPORATION OF THE CITY OF PICKERING
DEPARTMENT OF ENGINEERING SERVICES

FRISQUE LANDS

EROSION AND SEDIMENT CONTROL PLAN

EAST
CANDEVCON EAST LIMITED
CONSULTING ENGINEERS & PLANNERS
1600 STELLAR DRIVE, SUITE 402 WHITEBY, ONTARIO L1N 9B2
TEL (289) 315-3680 FAX (905) 794-0611

PROJECT No.	E21007
DRAWN BY :	C.G.
DESIGNED BY :	A.K.
CHECKED BY :	M.F.
REVISION DATE:	Nov. 21, 2023

