

# ARCHEOWORKS INC.

Stage 1-2 Archaeological Assessment for the  
Proposed Development of 3225 Fifth Concession  
Draft Plan of Subdivision 18T-87096  
Within Part of Lots 3 and 4, Concession 5  
In the Geographic Township of Pickering  
Former County of Ontario  
Now in the City of Pickering  
Regional Municipality of Durham  
Ontario

Project #: 345-PI8332-21  
Licensee (#): Ian Boyce (P1059)  
PIF#: P1059-0074-2021

Supplementary Document

May 2, 2022

**Presented to:**  
***869547 Ontario Inc.***  
1730 McPherson Court  
Unit 21  
Pickering, Ontario  
L1W 3E6  
T: 905.831.9200

**Prepared by:**  
***Archeoworks Inc.***  
16715-12 Yonge Street, Suite 1029  
Newmarket, Ontario  
L3X 1X4  
T: 416.676.5597  
F: 647.436.1938

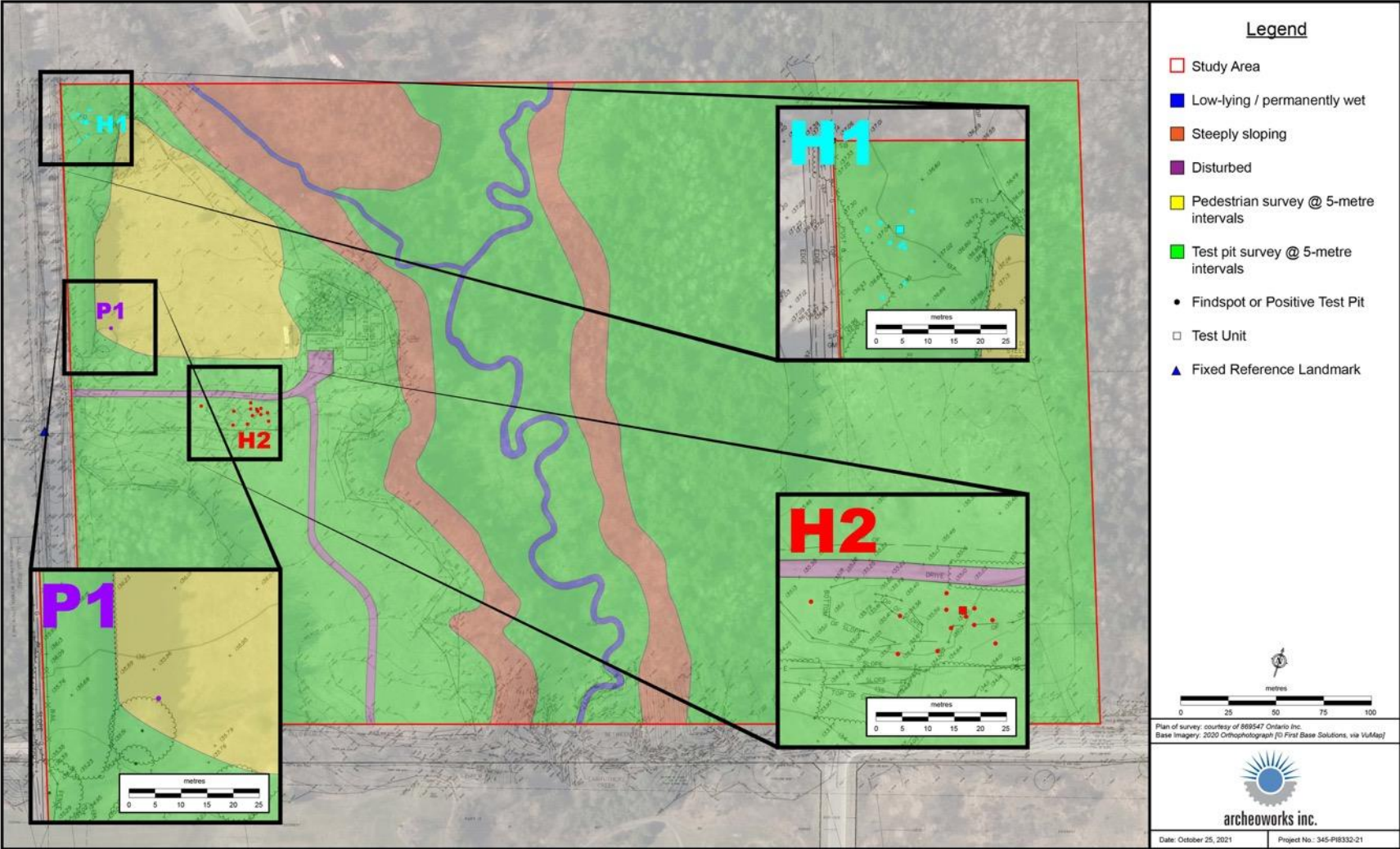
# TABLE OF CONTENTS

TABLE OF CONTENTS .....	ii
1.0 DETAILED MAPS.....	1
2.0 ADDITIONAL FIELDWORK PHOTOGRAPHS .....	3
3.0 DETAILED SITE LOCATION INFORMATION .....	4

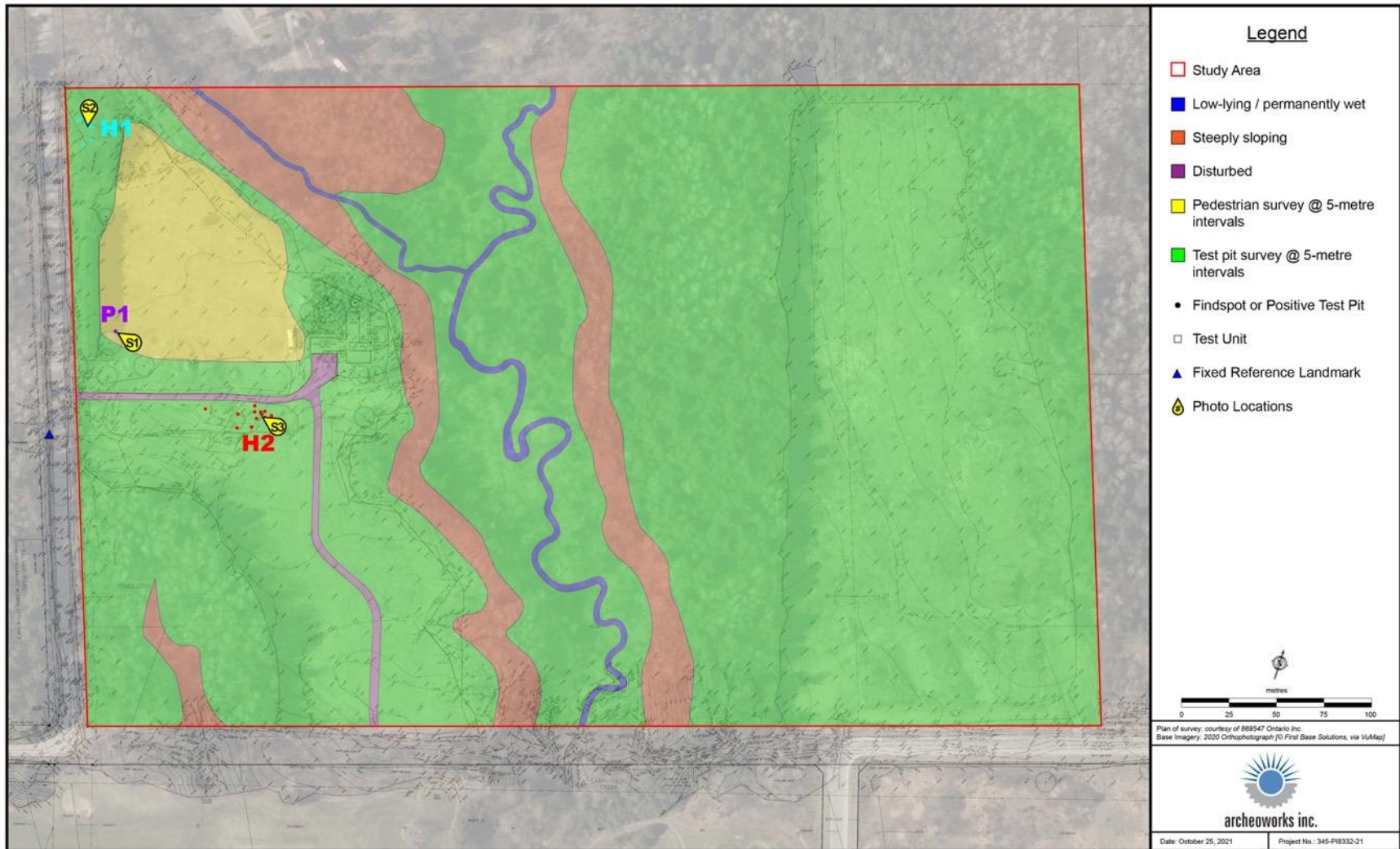
## LIST OF TABLES

TABLE 1: H1 (ALGS-508).....	4
TABLE 2: H2 (ALGS-509).....	4
TABLE 3: P1 .....	5

# 1.0 DETAILED MAPS



Map S-1: Stage 1-2 AA results showing the locations of identified archaeological sites.



Map S-2: Stage 1-2 AA results with locations for Images S1 to S3 indicated.



## 2.0 ADDITIONAL FIELDWORK PHOTOGRAPHS



Image S1: Reduced pedestrian survey transect intervals at the P1 Findspot.



Image S2: Intensified test pit survey at H1.



Image S3: Intensified test pit survey at H2.

### 3.0 DETAILED SITE LOCATION INFORMATION

Table 1: H1 (AIGs-508)

<b>GPS Device</b>	<i>Trimble GeoExplorer</i>			
<b>UTM grid zone</b>	17T			
<b>Datum</b>	NAD 1983 CSRS			
<b>Method of Correction</b>	Base Differential Correction			
<b>Accuracy</b>	Less than one metre			
<b>Fixed reference landmark</b>	17T 658242 4864811 (hydro pole #4035 along west side of Sideline 4, about 155 metres northwest of Fifth Concession Road)			
<b>Description of Location</b>	Site is located in a wooded area at the northwest corner of the 3225 Sideline 4 property, about 20 metres east of the Sideline 4 centreline and 325 metres northwest of the Fifth Concession/Sideline 4 intersection.			
<b>Size of Site</b>	Roughly 20 metres long (NW-SE) by 15 metres wide (NE-SW)			
<b>Site Extent</b>	Centre	17T 658207 4864970	South	17T 658207 4864960
	North	17T 658207 4864979	West	17T 658201 4864970
	East	17T 658213 4864970		
<b>Recorded GPS Coordinate(s)</b>	TP01	17T 658209 4864971	TP06	17T 658207 4864971
	TP02	17T 658201 4864972	TP07	17T 658209 4864971
	TP03	17T 658212 4864965	TP08	17T 658210 4864971
	TP04	17T 658209 4864961	TP09	17T 658209 4864978
	TP05	17T 658204 4864974	Test Unit	17T 597124.8 4875521.1
<b>Recommendations</b>	Stage 3 AA is recommended for this site			

Table 2: H2 (AIGs-509)

<b>GPS Device</b>	<i>Trimble GeoExplorer</i>			
<b>UTM grid zone</b>	17T			
<b>Datum</b>	NAD 1983 CSRS			
<b>Method of Correction</b>	Base Differential Correction			
<b>Accuracy</b>	Less than one metre			
<b>Fixed reference landmark</b>	17T 658242 4864811 (hydro pole #4035 along west side of Sideline 4, about 155 metres northwest of Fifth Concession Road)			
<b>Description of Location</b>	Site is located in an open field at the southwest corner of the intersection of two gravel driveways, about 95 metres east of Sideline 4 centreline and 190 metres northeast of the Fifth Concession/Sideline 4 intersection.			
<b>Size of Site</b>	Roughly 40 metres long (E-W) by 15 metres wide (N-S)			
<b>Site Extent</b>	Centre	17T 658333 4864855	South	17T 658333 4864847
	North	17T 658333 4864863	West	17T 658314 4864855
	East	17T 658352 4864855		
<b>Recorded GPS Coordinate(s)</b>	TP01	17T 658349 4864859	TP08	17T 658345 4864860
	TP02	17T 658351 4864855	TP09	17T 658346 4864857
	TP03	17T 658344 4864858	TP10	17T 658342 4864855
	TP04	17T 658341 4864850	TP11	17T 658340 4864858
	TP05	17T 658334 4864847	TP12	17T 658339 4864861
	TP06	17T 658332 4864854	Test Unit	17T 658343 4864859
	TP07	17T 658315 4864851		
<b>Recommendations</b>	Stage 3 AA is not recommended for this site			

Table 3: P1

<b>GPS Device</b>	<i>Trimble GeoExplorer</i>
<b>UTM grid zone</b>	17T
<b>Datum</b>	NAD 1983 CSRS
<b>Method of Correction</b>	Base Differential Correction
<b>Accuracy</b>	Less than one metre
<b>Fixed reference landmark</b>	17T 658242 4864811 (hydro pole #4035 along west side of Sideline 4, about 155 metres northwest of Fifth Concession Road)
<b>Description of Location</b>	Findspot is located in an open field, about 30 metres northeast of the Sideline 4 centreline and 30 metres northwest of the east-west gravel driveway.
<b>Size of Site</b>	Less than 5 m x 5 m
<b>Recorded GPS Coordinate</b>	Centre / FS01: 17T 658257 4864874
<b>Recommendations</b>	Stage 3 AA is not recommended for this site