



2055 BROCK ROAD

(ISSUED FOR ZONING BY-LAW AMENDMENT)

BROCK RD DUFFINS FOREST INC.
22 ROSS SHINER LANE, STOUFVILLE, ON L4A 0V4

ARCHITECTURAL CONSULTANT:

KOHN PARTNERSHIP ARCHITECTS INC.
116 SPADINA AVENUE, SUITE 501
TORONTO, ON
MSV 2K6

T: 416-703-6700

PLANNING CONSULTANT:

MHBC PLANNING LTD.
7050 WESTON ROAD, SUITE 320
WOODBRIIDGE, ON
L4L 8G7

T: 905-426-5588

CIVIL CONSULTANT:

SABOURIN KIMBLE & ASSOCIATES LTD.
110 OLD KINGSTON RD
AJAX, ON
L1T 2Z9

T: 905-426-9451

GEOTECHNICAL CONSULTANT:

SOIL ENGINEERS LTD.
100 NUGGET AVE
TORONTO, ON
M1S 5A7

T: 416-754-8515

ARCHEOLOGICAL CONSULTANT:

ASI ARCHEOLOGICAL & CULTURAL
HERITAGE SERVICES
2321 FAIRVIEW STREET, UNIT 200
BURLINGTON, ON
L7R 2E3

T: 416-966-1069

NOISE CONSULTANT:

YCA ENGINEERING LTD.
9251 YONGE STREET, SUITE 8557
RICHMOND HILL, ON
L4C 9T3

T: 416-894-3213

TRANSPORTATION CONSULTANT:

C.F. CROZIER & ASSOCIATES
CONSULTING ENGINEERS
211 YONGE STREET, SUITE 301
TORONTO, ON
M5B 1M4

T: 905-693-7849

ENVIRONMENTAL CONSULTANT:

DILLON
235 YORKLAND BOULEVARD, SUITE 800
TORONTO, ON
M2J 4Y8

T: 416-229-4646

DRAWING LIST (ZBA SET)

SHEET NUMBER	SHEET NAME	ISSUED FOR COORDINATION (2020-02-20)	ISSUED FOR ZBA #1 (2020-04-02)	ISSUED FOR ZBA #2 (2020-04-02)	ISSUED FOR ZBA #3 (2020-04-02)
20-ZBA/SPA					
A0 00	COVER SHEET	■	■	■	■
A1 00	CONTEXT PLAN	■	■	■	■
A1 01	ENLARGED SITE PLAN & STATISTICS	■	■	■	■
A2 00	LEVEL P1 & P2 FLOOR PLAN	■	■	■	■
A2 01	BLOCK A - LEVEL 1	■	■	■	■
A2 02	BLOCK A - LEVEL 2, 3, 4, 5, 6, 7-20	■	■	■	■
A2 03	BLOCK A - ROOF PLAN	■	■	■	■
A2 04	BLOCK B, C, D - FLOOR PLANS	■	■	■	■
A4 00	BLOCK A - ELEVATIONS	■	■	■	■
A4 01	BLOCK B, C, D - ELEVATIONS	■	■	■	■
A4 10	OVERALL SITE SECTIONS	■	■	■	■

Kohn

Kohn Partnership Architects Inc.
116 Spadina Avenue, Suite 501, Toronto ON MSV 2K6
Tel 416.703.6700 www.kohnarchitects.com

ALL DIMENSIONS ARE GIVEN IN MILLIMETRES UNLESS OTHERWISE INDICATED.
DO NOT SCALE DRAWINGS.
CONTRACTOR SHALL VERIFY AND CHECK ALL DIMENSIONS AND CONDITIONS ON SITE PRIOR TO STARTING ANY OF THE WORK AND REPORT ANY DISCREPANCY TO THE ARCHITECT AND CONSULTANTS BEFORE PROCEEDING. CONSTRUCTION MUST CONFORM TO ALL APPLICABLE CODES AND REQUIREMENTS OF AUTHORITIES HAVING JURISDICTION PERTAINING TO THIS APPLICATION.
THE ARCHITECT BEARS NO RESPONSIBILITY FOR THE INTERPRETATION OF THESE DOCUMENTS BY THE CONTRACTOR. UPON WRITTEN APPLICATION THE ARCHITECT WILL PROVIDE WRITTEN OR GRAPHIC CLARIFICATION AS SUPPLEMENTARY INFORMATION REGARDING THE INTENT OF THE CONTRACT DOCUMENTS.
LOCATIONS OF EXPOSED MECHANICAL OR ELECTRICAL DEVICES, FITTINGS AND PATTERNS ARE INDICATED ON ARCHITECTURAL DRAWINGS. THESE SHALL GOVERN OVER THE MECHANICAL AND ELECTRICAL DRAWINGS. THOSE ITEMS NOT CLEARLY LOCATED TO BE LOCATED AS DIRECTED BY THE ARCHITECT.
NO INVESTIGATION HAS BEEN UNDERTAKEN OR REPORTED ON THIS OFFICE IN REGARD TO THE ENVIRONMENTAL CONDITIONS OR POLLUTIONS OF THIS SITE.
COPYRIGHT 2020 KOHN ARCHITECTS INC.
COPYRIGHT OF THIS DRAWING AND THE DESIGN INTENT IS RESERVED BY THE ARCHITECT. THE DRAWING AND ALL ASSOCIATED DOCUMENTS ARE AN INSTRUMENT OF SERVICE BY KOHN ARCHITECTS INC. THE DRAWING AND THE INFORMATION CONTAINED THEREIN MAY NOT BE REPRODUCED IN WHOLE OR IN PART WITHOUT PRIOR WRITTEN PERMISSION OF THE KOHN ARCHITECTS INC.
ALL DRAWINGS ARE THE PROPERTY OF THE ARCHITECT AND MUST BE RETURNED ON REQUEST.

ISSUE DATES AND DISTRIBUTION LOG

No.	Date	Note
1	2019-08-28	ISSUED FOR COORDINATION
2	2020-02-20	ISSUED FOR COORDINATION
3	2020-04-02	ISSUED FOR ZBA #1



Project: **2055 BROCK ROAD**

BROCK RD DUFFINS FOREST INC.

PICKERING ON

Drawing Title: **COVER SHEET**

Project Manager Team: ES Project No: 17-119

Date Plotted: 2020-04-02 11:00:41 AM Scale:

Drawing No.: **A0 00**

A0 00

ALL DIMENSIONS ARE GIVEN IN MILLIMETRES UNLESS OTHERWISE INDICATED

CONTRACTOR SHALL VERIFY AND CHECK ALL DIMENSIONS AND CONDITIONS ON SITE PRIOR TO STARTING ANY OF THE WORK AND REPORT ANY DISCREPANCY TO THE ARCHITECT AND CONSULT WITH BEFORE PROCEEDING. CONSTRUCTION MUST CONFORM TO ALL APPLICABLE CODES AND REQUIREMENTS OF AUTHORITIES HAVING JURISDICTION PERTAINING TO THIS APPLICATION.

THE ARCHITECT BEARS NO RESPONSIBILITY FOR THE INTERPRETATION OF THESE DOCUMENTS BY THE CONTRACTOR. UPON WRITTEN APPLICATION THE ARCHITECT WILL PROVIDE WRITTEN OR GRAPHIC CLARIFICATION AS SUPPLEMENTARY INFORMATION REGARDING THE INTENT OF THE CONTRACT DOCUMENTS.

LOCATIONS OF EXPOSED MECHANICAL OR ELECTRICAL DEVICES, FITTINGS AND PATCHES ARE INDICATED ON ARCHITECTURAL DRAWINGS. FINISH SHALL GOVERN OVER THE MECHANICAL AND ELECTRICAL DRAWINGS. THOSE ITEMS NOT CLEARLY LOCATED TO BE LOCATED AS DIRECTED BY THE ARCHITECT.

NO INVESTIGATION HAS BEEN UNDERTAKEN OR REPORTED ON THIS OFFICE AS RELATED TO THE ENVIRONMENTAL CONDITIONS OR POLLUTIONS OF THIS SITE.

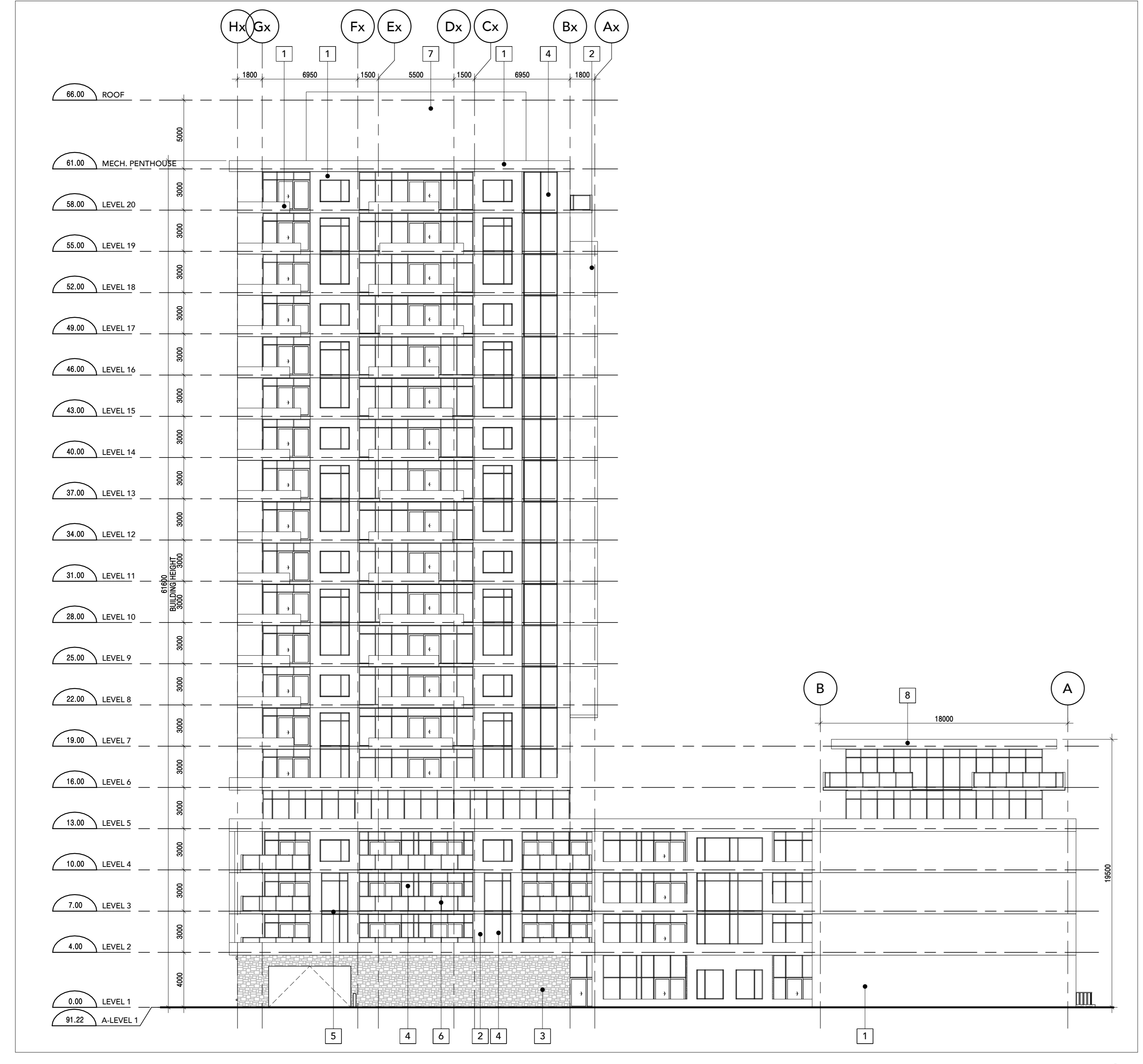
COPYRIGHT 2020 KOHN ARCHITECTS INC.

COPYRIGHT OF THIS DRAWING AND THE DESIGN INTENT IS RESERVED BY THE ARCHITECT. THE DRAWING AND ALL ASSOCIATED DOCUMENTS ARE AN INSTRUMENT OF SERVICE BY KOHN ARCHITECTS INC. THE DRAWING AND THE INFORMATION CONTAINED THEREIN MAY NOT BE REPRODUCED IN WHOLE OR IN PART WITHOUT PRIOR WRITTEN PERMISSION OF THE KOHN ARCHITECTS INC.

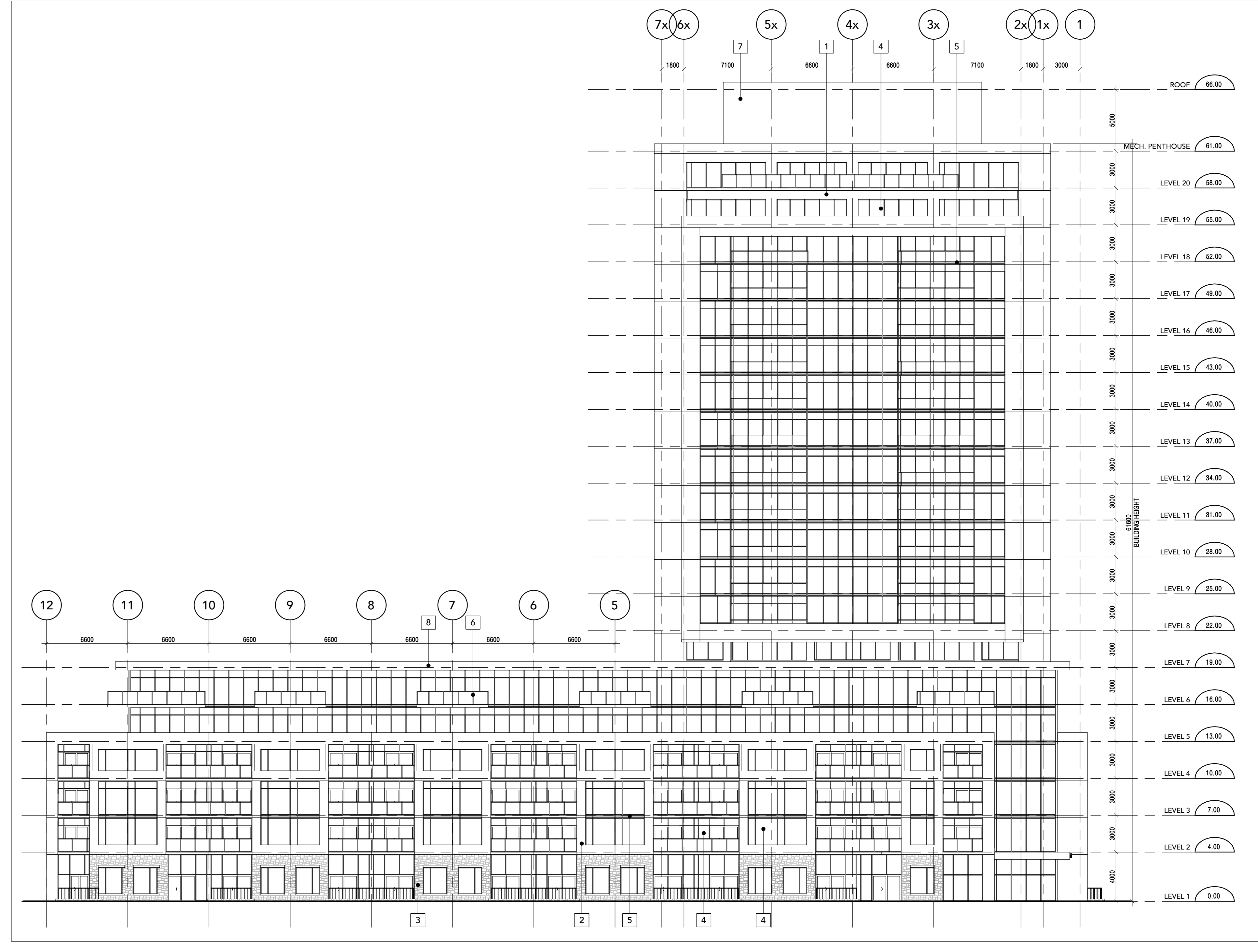
ALL DRAWINGS ARE THE PROPERTY OF THE ARCHITECT AND MUST BE RETURNED ON REQUEST.

ISSUE DATES AND DISTRIBUTION LOG

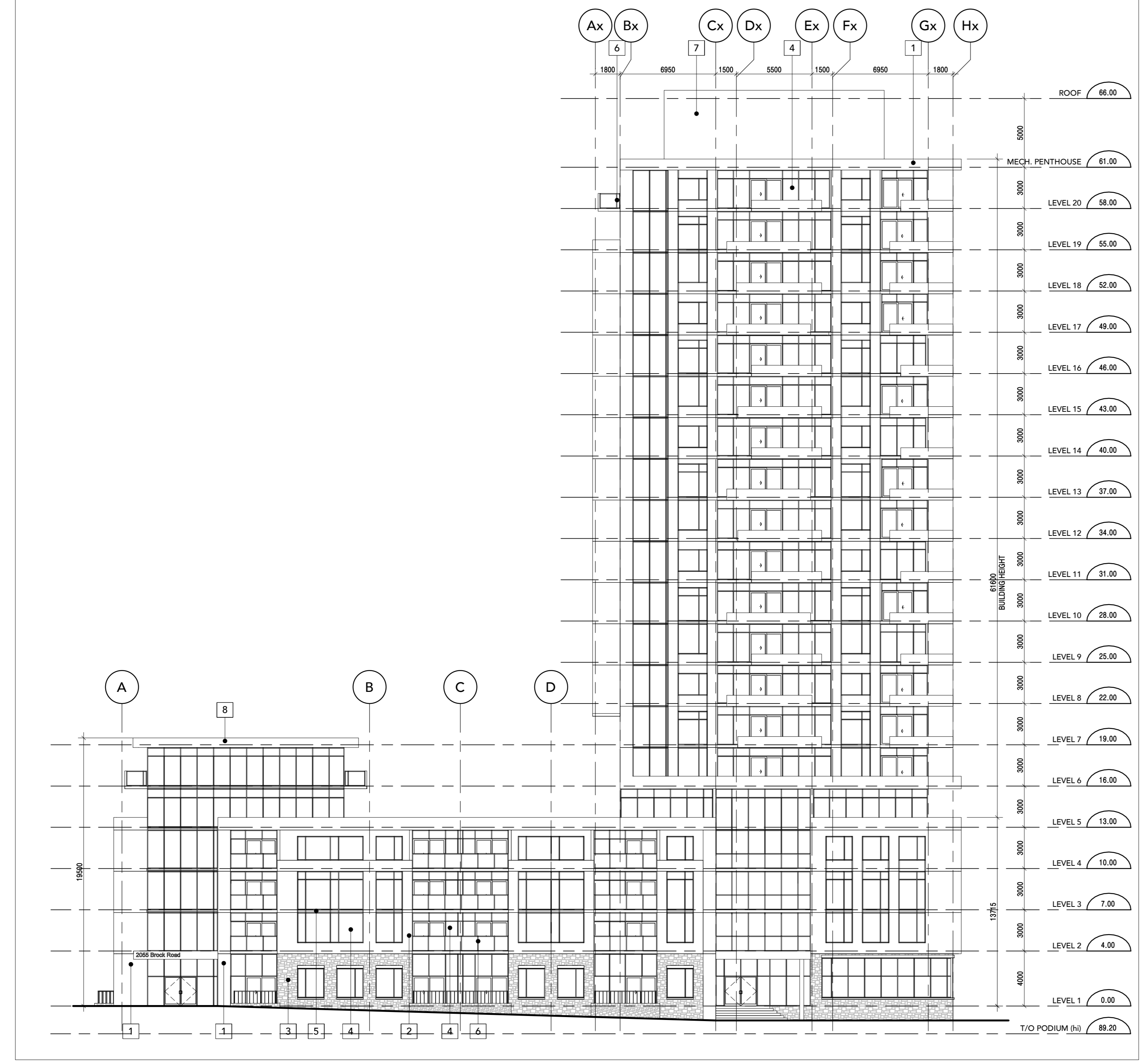
No.	Date	Note
1	2020-02-20	ISSUED FOR COORDINATION
2	2020-04-03	ISSUED FOR ZBA #1



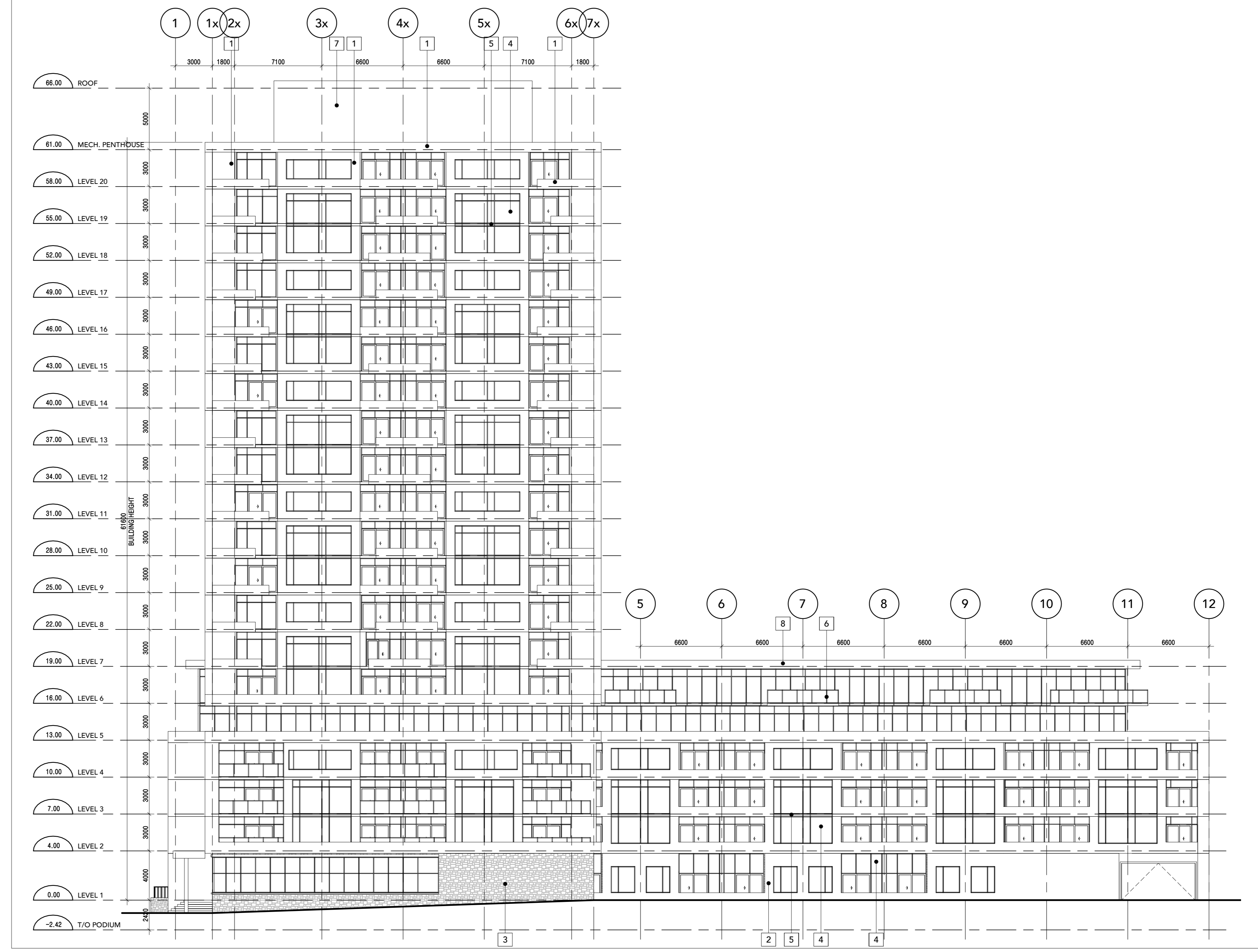
EAST ELEVATION 2
 SCALE: 1 : 200
 A4 00



NORTH ELEVATION 3
 SCALE: 1 : 200
 A4 00



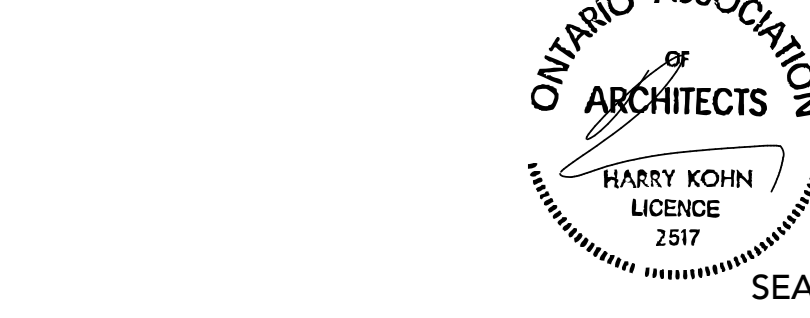
WEST ELEVATION 1
 SCALE: 1 : 200
 A4 00



SOUTH ELEVATION 4
 SCALE: 1 : 200
 A4 00

MATERIAL LEGEND

[1]	PRECAST CONCRETE PANEL
[2]	METAL PANEL
[3]	ARCHITECTURAL STONE
[4]	WINDOW WALL
[5]	SPANDREL
[6]	GLASS GUARDRAIL
[7]	METAL SIDING
[8]	PREFINISHED METAL
[9]	BRICK



Project:
2055 BROCK ROAD
 BROCK RD DUFFINS FOREST INC.
 PICKERING ON
 Drawing Title:
BLOCK A - ELEVATIONS

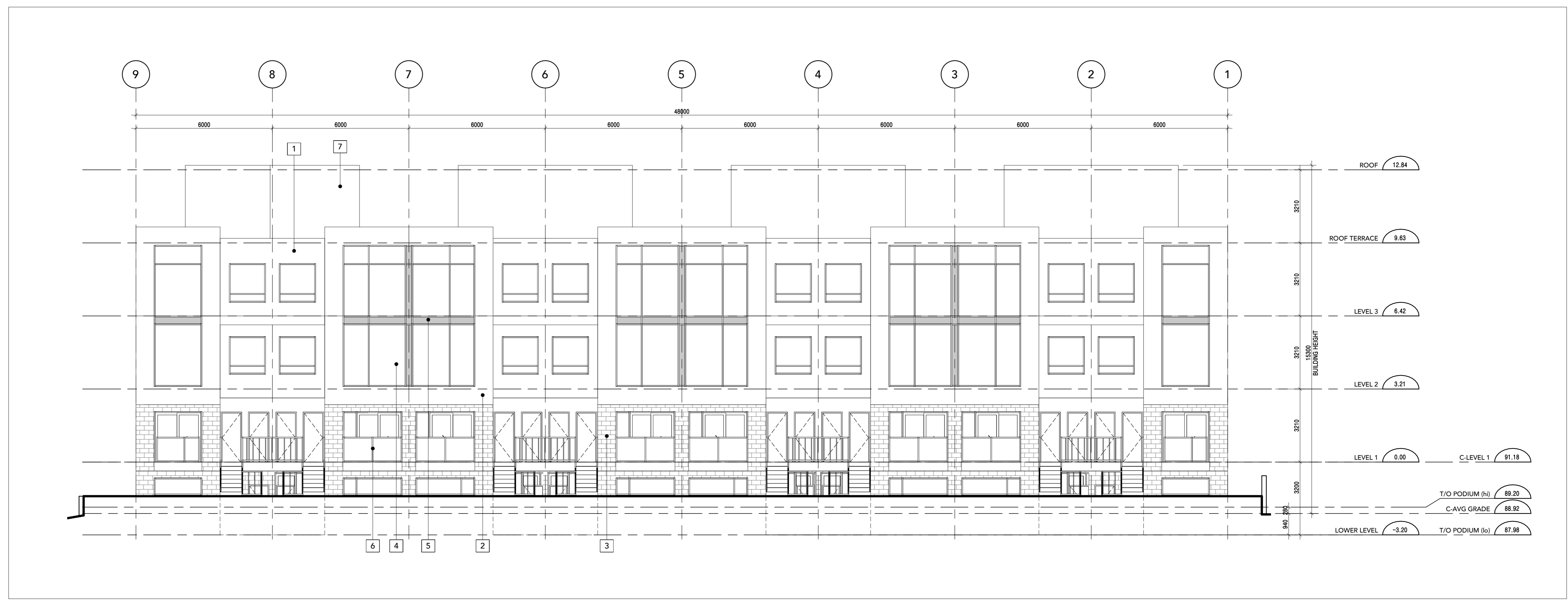
Project Manager Team: ES
 Date Plotted: 2020-04-02 11:20:26 AM
 Building No.:
 Project No.: 17-119
 Scale: As indicated
 Drawing No.: A

A A4 00

ALL DIMENSIONS ARE GIVEN IN MILLIMETRES UNLESS OTHERWISE INDICATED.
DO NOT SCALE DRAWINGS.
CONTRACTOR SHALL VERIFY AND CHECK ALL DIMENSIONS AND CONDITIONS ON SITE PRIOR TO STARTING ANY OF THE WORK AND REPORT ANY DISCREPANCY TO THE ARCHITECT AND CONSULTANTS BEFORE PROCEEDING. CONSTRUCTION MUST CONFORM TO ALL APPLICABLE CODES AND REQUIREMENTS OF AUTHORITIES HAVING JURISDICTION PERTAINING TO THIS APPLICATION.
THE ARCHITECT BEARS NO RESPONSIBILITY FOR THE INTERPRETATION OF THESE DOCUMENTS BY THE CONTRACTOR. UPON WRITTEN APPLICATION THE ARCHITECT WILL PROVIDE WRITTEN OR GRAPHIC CLARIFICATION AS SUPPLEMENTARY INFORMATION REGARDING THE INTENT OF THE CONTRACT DOCUMENTS.
LOCATIONS OF EXPOSED MECHANICAL OR ELECTRICAL DEVICES, FITTINGS AND PATCHES ARE INDICATED ON ARCHITECTURAL DRAWINGS. THESE ITEMS SHALL COORDINATE WITH THE MECHANICAL AND ELECTRICAL DRAWINGS. THOSE ITEMS NOT CLEARLY LOCATED TO BE LOCATED AS DIRECTED BY THE ARCHITECT.
NO INVESTIGATION HAS BEEN UNDERTAKEN OR REPORTED ON THIS OFFICE AS RELATED TO THE ENVIRONMENTAL CONDITIONS OR POLLUTIONS OF THIS SITE.
COPYRIGHT 2020 KOHN ARCHITECTS INC.
COPYRIGHT OF THIS DRAWING AND THE DESIGN INTENT IS RESERVED BY THE ARCHITECT. THE DRAWING AND ALL ASSOCIATED DOCUMENTS ARE AN INSTRUMENT OF SERVICE BY KOHN ARCHITECTS INC. THE DRAWING AND THE INFORMATION CONTAINED THEREIN MAY NOT BE REPRODUCED IN WHOLE OR IN PART WITHOUT THE WRITTEN PERMISSION OF THE KOHN ARCHITECTS INC.
ALL DIMENSIONS ARE THE PROPERTY OF THE ARCHITECT AND MUST BE RETURNED ON REQUEST.

ISSUE DATES AND DISTRIBUTION LOG

No.	Date	Note
1	2020-02-20	ISSUED FOR COORDINATION
2	2020-04-03	ISSUED FOR ZBA #1



[BLOCK D - NORTH ELEVATION] **BLOCK C - WEST ELEVATION** 2
SCALE: 1 : 100 A4 01

MATERIAL LEGEND

1	PRECAST CONCRETE PANEL
2	METAL PANEL
3	ARCHITECTURAL STONE
4	WINDOW WALL
5	SPANDREL
6	GLASS GUARDRAIL
7	METAL SIDING
8	PREFINISHED METAL
9	BRICK



BLOCK B - SOUTH ELEVATION 1
SCALE: 1 : 100 A4 01



Project: **2055 BROCK ROAD** ON
BROCK RD DUFFINS FOREST INC.
PICKERING
Drawing Title: **BLOCK B, C, D - ELEVATIONS**
Project Manager Team: _____ Project No: 17-119
Author: _____ Scale: As indicated
Date Plotted: 2020-04-02 11:20:44 AM
Building No.: _____ Drawing No.: _____

B A4 01