

KEY PLAN
N.T.S.

NOTES:

1. MEASUREMENTS IN METRES AND/OR MILLIMETRES UNLESS OTHERWISE SPECIFIED.
2. SEWAGE SERVICE FOR ALL LOTS TO BE VIA PRIVATE SEPTIC SYSTEMS.
3. SUMP PUMPS ARE TO BE UTILIZED FOR ALL LOTS AND ARE TO DISCHARGE TO SURFACE GRADE, INCL. SPLASH PADS.

LEGEND

- EX. UTILITY POLE
- ⊕ EX. HYDRANT
- ⊕ EX. WATER VALVE
- ⊕ EX. TREE
- 95.0 EX. CONTOUR
- 150.27 PROPOSED FINISHED GRADE
- 150.27 EXISTING GROUND GRADE
- 1:3 PROP. 3:1 SLOPE
- FD FRONT DRAINING LOT
- SD SPLIT DRAINING LOT
- BS BACK SPLIT LOT
- WO WALK OUT LOT
- EX. WATERMAIN
- PROP. WATERMAIN
- PROP. STORM SEWER
- ▭ PROP. BUILDING ENVELOPE
- ▭ PROP. SEPTIC BED/SYSTEM
- ➔ OVERLAND FLOW DIRECTION
- MEANDER BELT WIDTH
- - - MEANDER BELT WIDTH +30m SETBACK
- LIMIT OF VEGETATION
- LIMIT OF VEGETATION +10m SETBACK
- LIMIT OF WETLAND
- LIMIT OF WETLAND +30m SETBACK
- LIMIT OF STAKED FEATURE 10m SETBACK

REVISIONS

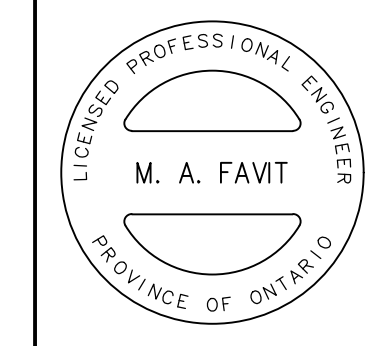
No.	BY	DATE	DESCRIPTION	APPROVED

THE CORPORATION OF THE CITY OF PICKERING
DEPARTMENT OF ENGINEERING SERVICES

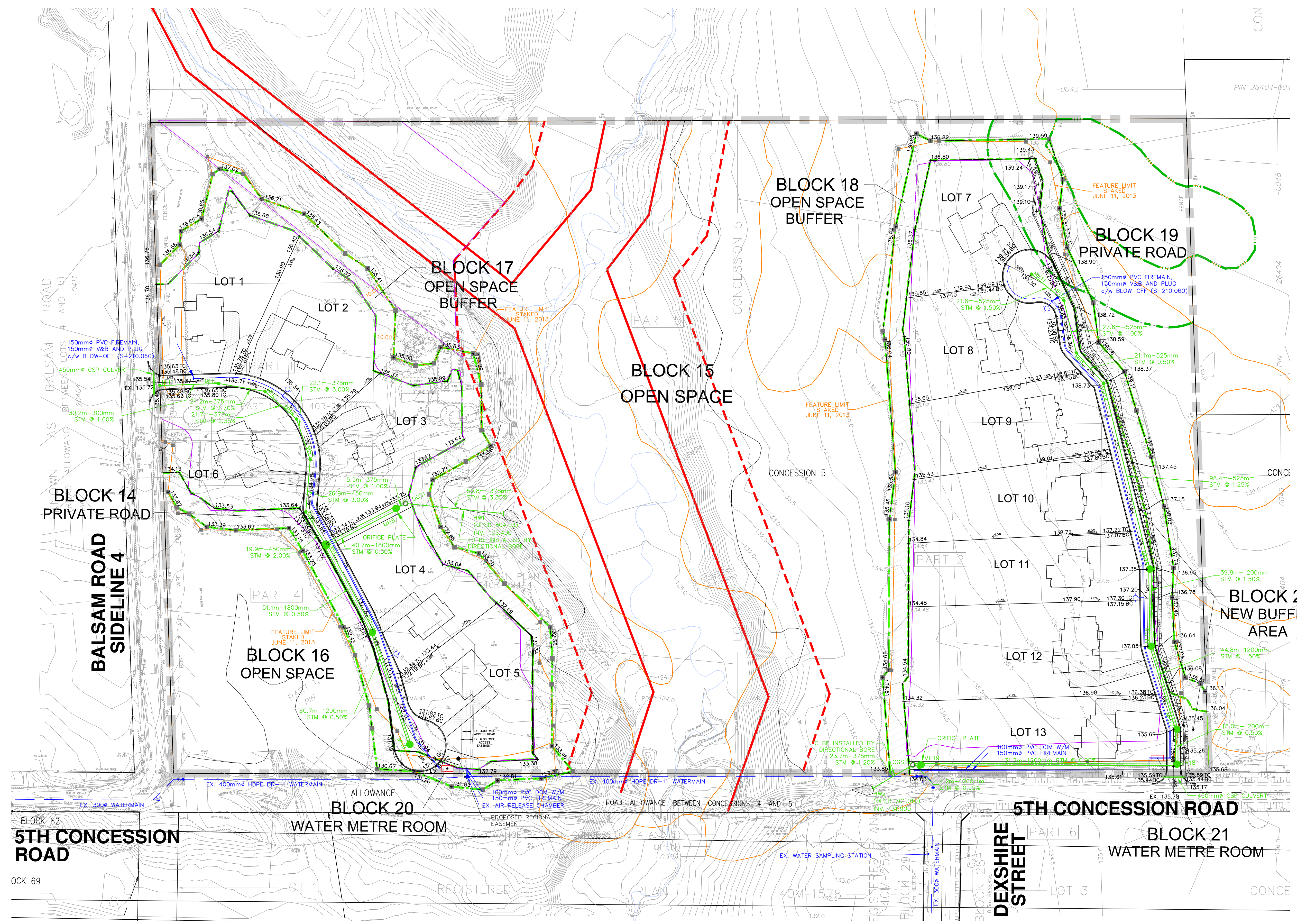
FRISQUE LANDS

FUNCTIONAL GRADING & SERVICING PLAN

CANDEVCON EAST LIMITED
CONSULTING ENGINEERS & PLANNERS
1600 STELLAR DRIVE, SUITE 402 WHITBY, ONTARIO L1N 9B2
TEL. (289) 315-3680 FAX (905) 794-0611



SCALE : 1:1000	PROJECT No. E21007
DRAWN BY : J.R.	DRAWING No.
DESIGNED BY : A.K.	FSGP
CHECKED BY : M.F.	REVISION DATE: June 23, 2023



OCK 69