

Animal Services Emergency Response Plan



Originally Created: July 21, 2010

Updated: February 28, 2014, March 17, 2021

— *City of* —
PICKERING

General

The City of Pickering's Animal Services Emergency Response Plan has been developed to enable the City to act in an efficient and effective manner to ensure that the people and pets in Pickering are cared for during a community emergency.

Although disasters endanger the life and safety of both animals and humans, there are important preparedness measures that pertain specifically to animals. Through specific procedures, this Animal Services Emergency Response Plan details these considerations in order to protect animals as best possible. Other disasters have demonstrated that providing care for animals plays a role in facilitating the personal safety and care of a large number of people and ultimately affects the success of evacuation efforts.

While emergencies such as ice storms, flooding, fire, transportation disasters, hazardous material spills, nuclear emergencies and communicable disease outbreaks are the most likely. It is important for the Animal Services Emergency Response Plan to be flexible and scalable and provide the procedures necessary to successfully shelter and care for animals in any disaster.

The Animal Services Emergency Response Plan, through its procedures, will advise pet owners on how to care for companion animals left behind and develop an animal evacuation plan. The plan will also detail care for evacuated and non-evacuated animals, provide measures to control animals running at large, and provide a public response mechanism to answer questions on animal concerns.

When the City of Pickering Emergency Response Plan is activated in whole or in part because of an emergency, Pickering Animal Services with the support of other agencies (as applicable) will assist individuals/businesses evacuated or displaced by such an emergency with the housing and care of their owned domestic companion animals. Pickering Animal Services will continue to respond to emergencies of sick and/or injured stray animals found in Pickering.

Purpose

The purpose of this plan is to enable residents with household pets to evacuate during an emergency while providing a safe place for them to care for their own pets. The plan will control, and support the humane care and treatment of companion animals during any emergency in the City of Pickering. It will describe policies and procedures for evacuation, care and control of animals during a disaster, as well as the related roles and responsibilities of participating agencies and external partners.

Definitions

Animal Services – Shall mean the staff unit of the Municipality taking the lead in the emergency resource. However, when the emergency response is coordinated and managed by the Region of Durham, Animal Services shall mean the staff unit comprising of staff of the Municipal Animal Service Agencies.

Companion Animal – Shall mean a dog, cat or any other pet that is generally understood to be domesticated and is typically kept indoors as a pet.

Declared Emergency – Shall mean an emergency declared by a signed declaration made in writing by the Head of Council or the Premier of Ontario in accordance with the Emergency management Act. This declaration is usually based on a situation or an impending situation that threatens public safety, public health, the environment, critical infrastructure, property, and/or economic stability and exceeds the scope of routine community activity.

Emergency – Situations or the threat of impending situations, abnormally affecting property and the health, safety and welfare of a community, which by their nature and magnitude, require a controlled and coordinated response by all agencies.

Emergency Animal Facility (EAF) – Shall mean the designated area for the safekeeping and care of domestic animals during a response to a declared emergency.

Emergency Plan – Shall mean the plan developed and approved by the Council of the City of Pickering.

Evacuation Centre – Shall mean the designated area where residents report to when there has been a man-made or natural emergency. The Evacuation Centre will be a location (outside the affected area) designed to receive, register and provide short term food, shelter, first aid, counseling and other services to person who have been temporarily displaced from their normal residence.

Municipal Animal Services Agency – Shall mean the animal services department/division operated by all Municipalities located in the Region of Durham.

Reception Centre(s) – Shall mean the designated area where residents report to when there has been an emission or it is occurring at a nuclear generating station. The Reception Centre will be a location, outside the Primary Zone, through which evacuees should pass to receive assistance, which would normally include monitoring and decontamination, first aid and direction to an evacuee centre. One reception centre would usually serve several evacuee centres.

Supervisor – Shall mean the staff person designated by the Manager, Municipal Law Enforcement Services to perform the Supervisor of Animal Services duties and responsibilities as defined in this Plan.

Administration

The Supervisor, Animal Services in consultation with the Manager, Municipal Law Enforcement Services is responsible for the development and maintenance of this Plan.

The Plan will be reviewed and updated annually, or when required to reflect changes in legislation, policy, resources, personnel or any other changes deemed necessary.

Plan Approval

This Plan was approved by Council Resolution #132/10 dated July 12, 2010 and is part of the supporting documents for the City of Pickering's Community Emergency Management Plan.

Legislative Authority

The authority for all municipal emergency plans is the Emergency Management and Civil Protection Act, R.S.O 1990 and Regulation 380/04.

This plan will be implemented in support of the City of Pickering's Community Emergency Management Plan.

Demographics and Animal Population Estimates

The City of Pickering has an estimated 98,578 residents and an estimate of 33,672 private households. Using the formula and information found in the 2017-2018 U.S. Pet Ownership & Demographics Sourcebook the following is an estimate of the number of households owning animals in the City of Pickering. Calculations go the assumption that 38.4% of households have a dog and 25.4% have a cat as a pet.

Number of Households Owning Animals

- # households owning dogs: $33,672 \times .384 = 12,930.05$
- # households owning cats: $33,672 \times .254 = 8,552.69$

Number of Pets in Pickering

- Dogs: $1.6 \times 12,930.05 = 20,688.08$
- Cats: $1.8 \times 8,552.69 = 15,395$

The confinement and care of pets during an emergency is based on a planning assumption that approximately 20% of the population being evacuated will be requiring emergency lodging and 30% of evacuees will require housing for their pet(s).

Planning Assumptions

In an Emergency:

- When an emergency has been declared and a request is received to respond, the following persons shall have authority and take responsibility to implement the appropriate provisions of the plan:
 - The Manager, Municipal Enforcement Services, or a designate
 - The Supervisor, Animal Services
 - An Animal Services Officer
- For the purpose of advising the community how emergency procedures affect owned animals, The Supervisor, Animal Services, or a designate through the Manager, Municipal Enforcement Services, will be responsible to maintain contact with the MECG (Communications Team).
- Animal Services Staff will follow all emergency procedures that are approved and in place by the City.
- Routine Animal Services activities will be suspended. Only high priority calls as determined by the Supervisor, Animal Services or a designate will receive attention.
- Pickering Animal Services will be dedicated to providing assistance to the community and to other agencies in the care and confinement of owned domestic animals.
- Pickering Animal Services will co-operate with other animal services agencies, organizations and individuals to assure that care, control and safety is provided for all confined animals.

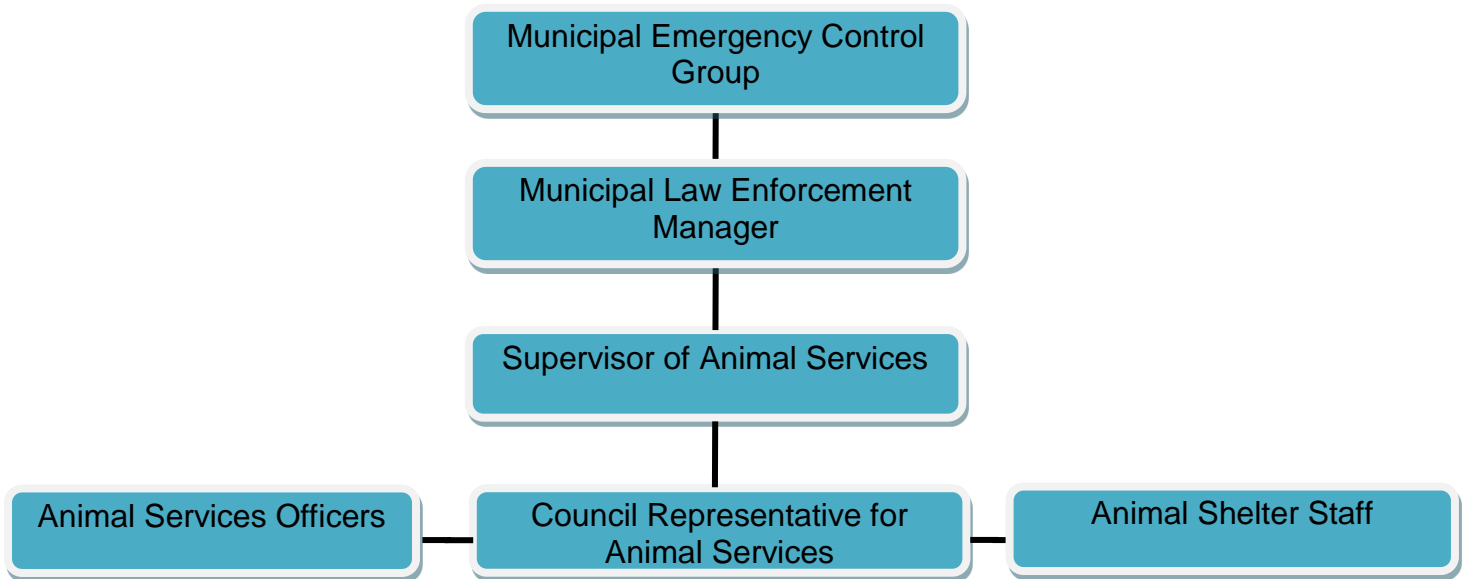
Notifying Staff

The declaration of an emergency will be received through the City of Pickering's Community Emergency management Plan Notification Procedure. Once an emergency is declared, Animal Services Staff will follow all approved emergency procedures in place.

When an Emergency has been declared, the Supervisor, Animal Services shall notify staff members. In the event that a staff member cannot be reached in person, a message shall be left (if possible) at the residence for that staff person to contact Animal Services or such telephone number or individual as may be designated in charge of telephoning staff members.

All Animal Services staff may be on 24-hour alert so long as a declared emergency exists.

Emergency Notification Flow Chart



Notifying Supporting Agencies

During a declared emergency, the City's capacity to respond to animal care and relief issues may become overwhelmed. Supporting agencies and organizations will be an essential part of meeting the diverse needs of animal owners and their pets.

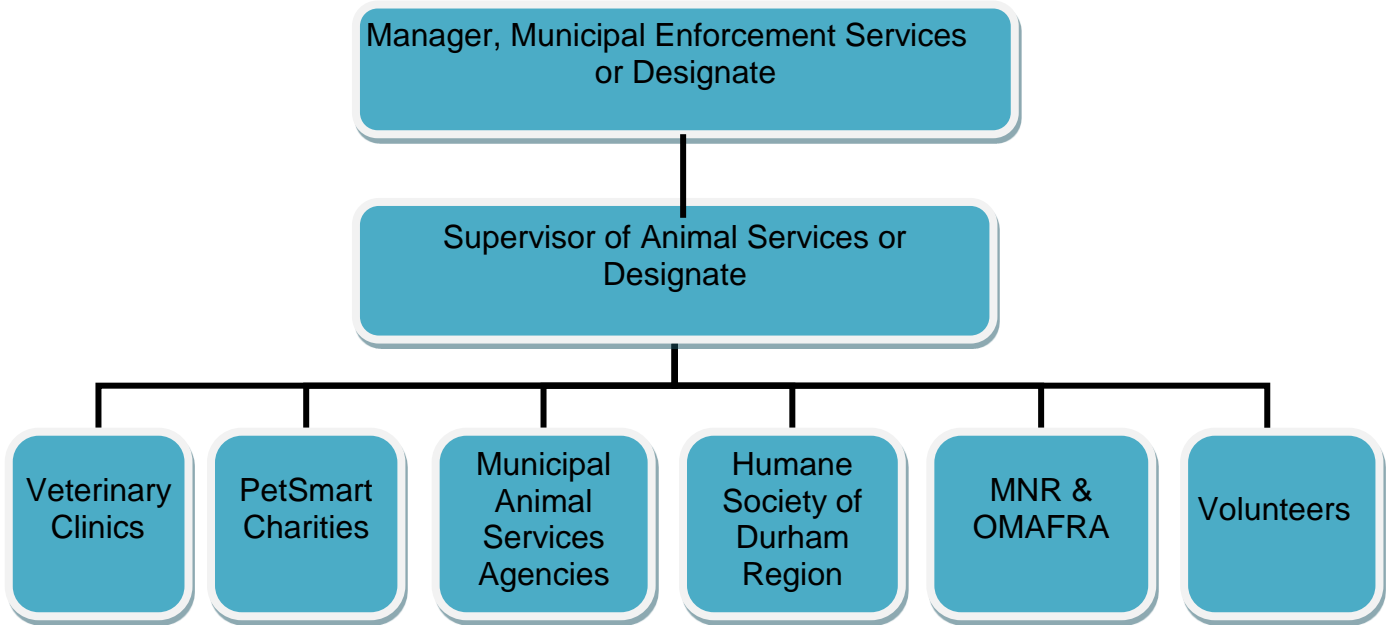
Ontario Ministry of Agriculture, Food and Rural Affairs (OMAFRA) provides emergency support to farming community related to livestock issues. They may also assist in the provision of resources and supplies/equipment and information.

Ontario Ministry of Natural Resources provides personnel and equipment for the care of wild animals.

Canadian Food & Inspection Agency (CFIA) – The lead agency responsible for the control and elimination of contagious diseases such as “foot and mouth disease”. As the “lead” agency responsible for dealing with such an outbreak, the Canadian Food Inspection Agency will designate control zones and direct all other agencies in combating the outbreak. The CFIA Department will request the cooperation of municipal agencies, through the City of Pickering Municipal Control Group.

When an Emergency has been declared, the Supervisor of Animal Services in consultation with the Manager, Municipal Enforcement Services, or designate, will evaluate the need for additional help and if necessary arrange to contact supporting agencies, volunteers and organizations for further assistance.

Agency Support Notification Flow Chart



Set Up Of Emergency Animal Facility

Experience has shown that during emergencies some people are more concerned for their animals' safety than themselves. This has led to reports of evacuation failure, re-entry attempts and pet owners injured and/or killed while attempting to rescue their animals.

During a declared emergency, the goal of Animals Services is to ensure that all animals are in a safe environment relieving them and their owners of unnecessary distress.

Where there is no immediate harm to the animal (e.g. extreme snow or heat) and the animal(s) are safe temporarily in their home environment, Animal Services will provide support to owners of the animals.

Where there is an immediate direct threat to the health and safety of owned domestic animals, and the emergency has necessitated an evacuation centre or reception centre to be opened, the City of Pickering will set up an Emergency Animal Facility.

After an emergency has been declared and, depending on the nature and the location of the emergency, the Emergency Animal Facility will be established at site(s) identified by Durham Region and the City of Pickering. Keeping in mind the connection that people have with their pets, potential Emergency Animal Facilities fall into two categories, pet friendly and traditional facility.

Traditional Facility: An Emergency Animal Facility where animals are received from their guardians and are cared and maintained by Animal Services Staff. This location is

separate from the evacuation/reception centre. This is the traditional set-up and has proven to be stressful on both animals and people.

Pet Friendly Emergency Animal Facility: People and pets in same or adjacent areas of the building. This location is within an evacuation/reception centre where the pets' guardian has the ability to care and maintain the animal.

The Supervisor, Animal Services will contact supporting agencies in the event that all City locations are deemed disaster zones or, in the event that our Emergency Animal Facilities are at maximum capacity and cannot hold any more animals.

Once an emergency is declared, Animal Services Staff will follow all emergency procedures that are approved and in place by the City.

These procedures will address all facets of setting up an Emergency Animal Facility.