

## Appendix A – In-Person Public Information Centre

On September 24, 2024, from 6:00 p.m. to 8:00 p.m., members of the project team hosted an in-person public information centre at the Chestnut Hill Developments Recreation Complex (1867 Valley Farm Road). Approximately forty people attended the event. At the start of the event, City staff delivered a brief presentation defining the Official Plan, roles and responsibilities, and the purpose of the review.

### Question and Answer

Following the presentation, attendees were given the opportunity to ask questions of clarification. These are summarized below, with questions noted with a 'Q' and answers noted with an 'A'.

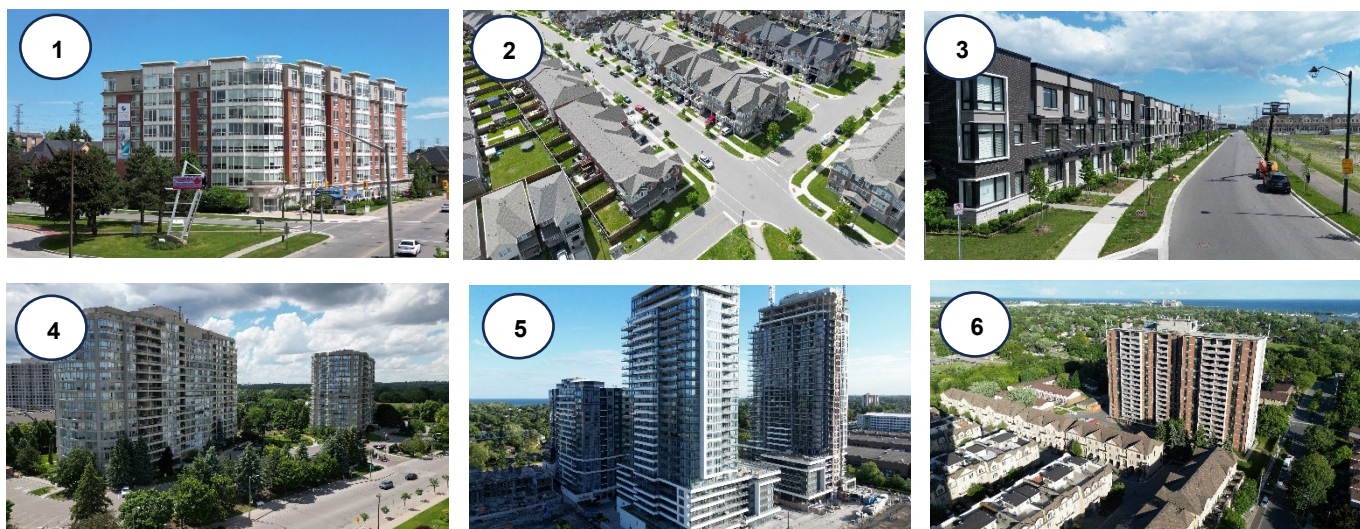
- **Q.** What is the population growth target that the Region of Durham has assigned to the City?
  - **A:** We are now at 100,000 residents, and by 2051, we need to plan for 250,000. This will make Pickering the second largest city in the Region of Durham after Oshawa.
- **Q.** What is the assigned job target for Pickering?
  - **A:** This will be covered in the following public information centre.
- **Q.** Will tomorrow evening's virtual public information centre be recorded for the public later?
  - **A:** We will have the presentation available online.
- **Q.** Was there a reason that 6 pm was the choice for tonight?
  - **A:** There is never a perfect time for everyone. That is why we are also hosting a virtual session tomorrow that starts at 7 pm.
- **Q.** How will we see that this feedback will make its way into the Official Plan?
  - **A:** We will have What We Heard reports after each event that will be published so that people can see the broad themes that have emerged from the input received. These will inform the draft policies. There are many opportunities for the community to speak to us about their thoughts.
- **Q.** How are you protecting the Greenbelt for future generations?
  - **A:** The Greenbelt Plan is one of the provincial plans that we are required to follow in our policy creation. We cannot make policies contrary to the Greenbelt Plan. Our policies will be informed by that plan and your input.
- **Q.** What stage will the reports be presented to the Council?
  - **A:** In stage 4 (approval stage). Our objective is that after several drafts, we will bring forward a recommended draft of the Official Plan in spring 2026 for Council's decision.
- **Q.** Pickering's current Official Plan has a vague section [Appendix I Quality of Life Indicators and Performance Targets] that is incomplete; will these be updated?
  - **A:** All will be updated. We will look at all maps, schedules, and appendices that are informed by the Plan.



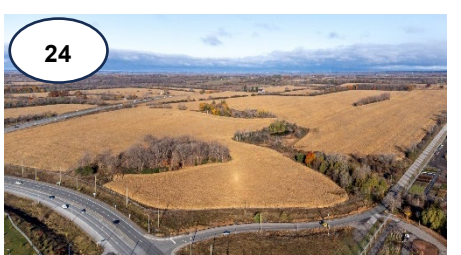
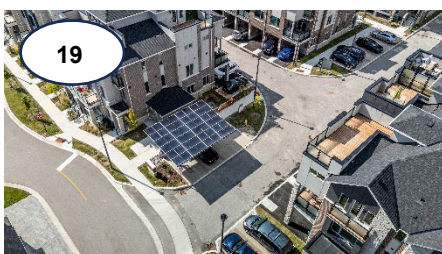
- **Q.** Can you consider decision criteria for what you should or should not develop? For example, keeping urban and rural development consistent with as it is zoned? If decisions are based on those criteria, it helps to make transparency for how things lead where.
  - **A:** Great suggestions. That is a format we use when evaluating comments, and we will make a matrix of input that says this is what we have received from the community, and this is how we have incorporated it.
- **Q.** Can you elaborate on the factors that led to these growth plans and how they have been determined?
  - **A:** The Region of Durham had its Official Plan approved by the Province, and there were lands that were identified as areas of growth. A recent decision by the Province withheld a decision on some of the land in Northeast Pickering from future development. Some existing areas within the City will be intensified (such as the city centre), and some development will occur in greenfield areas like Seaton.
- **Q:** Is the Airport plan going ahead?
  - **A:** This is land owned and controlled by the federal government.
- **Q:** When is the next event?
  - **A:** The date will be announced and communicated once it is set.

Following the question-and-answer portion of the event, small group discussions were conducted. Attendees were split into 6 tables of about 5 to 7 participants each. The discussions were centred around the future of Pickering to 2051 and, in particular, the vision and priorities of the Official Plan. Input from these small group discussions is summarized below and organized within discussion questions for each topic.

The following set of images was printed and displayed on each of the tables for participants to sift through and discuss their perceptions in association with the future of Pickering to 2051.











## Table One

### Exercise #1

**Point to one of two of the images that are important to you and explain why.**

- I like image 12.
- I like image 18 – I dislike high rises and enjoy walking on trails.
- I like image 25 – I dislike image 5 and image 13.
- I like image 5 and image 13. I like high rises.
- I like image 11 (nature) and dislike image 13 (high rises).
- I like image 18, image 11, and image 25 and dislike image 13.

### Exercise #2

**By 2051, Pickering will have...**

- Walkability.
- Montreal is an example of a socially connected space.
- Accessibility.
- Should not have massive buildings.
- Saved heritage.
- Local staff.
- Every kind of housing.
- Mixed use.
- Landscape.
- Connected city.
- Heritage.
- Connected.
- A place like Marham (heritage reputation).

**By 2051, Pickering will be known for...**

- Sidewalks.
- Accessible wheelchair, better infrastructure.
- More parks and spread out parkland.
- Safe sidewalks.
- Five-minute walks to coffee shops.
- Reduce chain restaurants/cafes/coffee shops and encourage unique one-off small businesses.

### Exercise #3

#### Vision:

##### **Do you resonate with the current Official Plan vision?**

- 5/5 participants at the table somewhat agree.

##### **What parts of the current Official Plan vision are still relevant?**

- Most are relevant.
- It is not clear.
- Most of the vision is still relevant, but it is too vague.

##### **What needs to be added or changed to the Official Plan vision?**

- Userfriendly transit.
- You should not have to drive.
- Food shops, coffee shops, restaurants close to residents – more community-based.
- Places for homeless people.
- Tiny homes can be an option.
- Housing and affordability needs to be the priority!
- Vision for new residents and increasing senior population spaces/community retail hubs together and connecting locally.

#### Priorities:

##### **Do you resonate with the current Official Plan priorities?**

- 5/5 participants at the table somewhat agree.

##### **What parts of the current Official Plan priorities are still relevant?**

- All inclusive.
- Healthy setting, such as hospitals.
- Percent of accessible buildings.
- Unique community.
- Shops.
- Keep current green space, walking trails and waterfront.
- Keep heritage.

##### **What needs to be added or changed to the Official Plan priorities?**

- Housing affordability should be first.
- Walkable cities.
- Variety.
- Community stops and higher walking score.
- The plan right now is too high level to comment on.
- More realistic growth numbers (have a smaller population than 250,000 people).
- Currently, traffic flow is difficult. There is not much room to fix this south of Highway 7.

- I do not want high rises (30 stories or higher); we do not need intensification.

#### Exercise #4

#### **Are there any important topics that you do not see included?**

- Housing affordability should come first.
- Healthcare for aging populations.
- New hospital in Pickering.

#### Additional Comments/Questions

- Who made the decision to determine the population growth predictions for the City of Pickering? It should be clear how you have come up with this number.
- How big and where are high-rises going?
- Are these events being advertised in schools?
- How do you engage the younger generations to attend these events?
- 6 pm is not a good time to hold an event.
- The health and safety of the existing residents is a priority. Need to update the energy management plan.

### Table Two

#### Exercise #1

#### **Point to one of two of the images that are important to you and explain why.**

- I have a concern about high towers coming up.
- I recognize the need for intensification.
- I do not want to stray from the identity and character of the City of Pickering.
- High-rise condos belong in Toronto but not here in Pickering.
- Impacts the sense of community in Pickering.
- I also recently retired and have concerns about stacked townhouses. They are meant for first-time buyers, but they are inaccessible—not just for people with disabilities but also for people who are aging. Pickering is an aging city with a large aging population. Developers should consider multi- or single-level housing to offer a percentage of units as being accessible.
- I see the need for growth. I agree with the need for condos, but I want the infrastructure to follow. We need parkland, jobs, etc. to follow suit.
- I see the need for densification, but we must maintain the views. Love the water here. It would be ideal to maintain that and the view. Also, we need infrastructure to support all that.
- I do not like the idea of clustering housing. Instead, I like wide boulevards and the ability to walk to stores, shops, and places such as in Washington. Want something unique in Pickering? For example, getting inspiration from different cities in North America and Europe.
- We have different waterways in Pickering and asked if we could take those and make them more livable and enjoyable by adding a walkway, etc.
- Make greenfields, bike lanes, wide sidewalks, etc.

- We need community programs for seniors, youth, etc. If there are no programs, high-rise condos attract more crime and mischief. So make sure this is coupled. Make complete communities.

## Exercise #2

### **By 2051, Pickering will have...**

- Maintained the waterfront in coherence with intensification. There needs to be consideration for infrastructure.
- Pickering's population is way too high. We need more facilities, parks, and an airport. We also need to attract businesses. We need a diverse population and affordable housing.
- Socially conscious, inclusive, and sustainable community that attracts new businesses and residents.
- More green space around buildings, more public transportation. More arts (e.g. arts centre). More protected green spaces, have the right kinds of jobs (more green and sustainable employment). More hospitals and healthcare.
- Socially inclusive and sustainable community that attracts new businesses and is a sought after community for new residents.
- More green spaces around buildings.
- Revised transportation system and public transit for diverse users.
- Have arts and culture for people who live here.
- Protect green spaces.
- More green and sustainable employment.
- More professional industries with intellectual property than public industry.
- Arts centre.
- Maintain waterfront and beach areas.
- Pickering has too many people.
- Unsustainable.
- No or little new parkland and recreational facilities to keep population growth.
- Hopefully not an airport.
- Less farmland.

### **By 2051, Pickering will be known for...**

- Planned communities.
- Design of landscape and buildings.
- Density that is accessible.
- Pathways for wildlife and nature to co-exist.
- Urban planning.
- Sustainable energy.
- Its sense of community, model development, and desirable living space.
- Urban design that considers the environment to have livable infrastructure – green technologies.
- More character in the design of landscapes and buildings.
- Density but not excessively.

- Pathways for wildlife and nature to co-exist.
- Densification that is planned and maintains the waterfront.
- Some planning that includes walking trails and bike paths.
- Infrastructure that serves the community (e.g. transportation).
- Diverse population.
- Affordable housing.

### Exercise #3

#### Vision:

#### **Do you resonate with the current Official Plan vision?**

- 5/5 participants at the table agree.

#### **What parts of the current Official Plan vision are still relevant?**

- Having a mission statement is so important.
- The vision is great and can apply to many things. It makes a lot of sense. Pickering had a lot of green space, and I want it maintained. This is captured in the priorities as well.
- General agreement about the vision.
- The vision statement and each of the five interrelated priorities contain significant details—the details lie here!
- Most still are relevant.
- Need to protect green space.

#### **What needs to be added or changed to the Official Plan vision?**

- I see a contradiction between having a unique community and an interconnected community.
- Suggest removing the word “unique”.
- Everything except “unique community” is kind of vague.
- Heritage should be maintained, with a lot of green space.
- Ensure green land is protected as much as possible.
- Balance between planning and entrepreneurship.
- Need to define Pickering separately so that it has a separate identity from just another municipality.
- Need to have a sense of community.

#### Priorities:

#### **Do you resonate with the current Official Plan priorities?**

- 4/5 participants at the table somewhat agree.
- 1/5 participants at the table agree.

#### **What parts of the current Official Plan priorities are still relevant?**

- Overall good, but it is a bit general sounding.

#### **What needs to be added or changed to the Official Plan priorities?**



- There is some agreement about the priorities.
- I would remove “unique community” from the priorities and I would add “giving immigrants and refugees services and opportunities”. We need to be able to welcome refugees in a proper way. We need to provide and be welcoming to the community.
- The vision and priorities encompass a lot. However, there needs to be more details, as there are so many policies in each sentence.
- Need to protect greenspace too.
- Major highways (such as the 401) divide the community in Pickering.
- Stronger emphasis on green practices.
- Remove “unique community”. It’s the same as other urban developments.
- Add “deal with refugees in a better manner than other municipalities”.
- I believe that any needs will become more clear with the details.

#### Exercise #4

#### **Are there any important topics that you do not see included?**

- Hard to comment because they are so vague.

#### Additional Comments/Questions

- Define sustainability from a planning perspective.
- How to plan for a community that can sustain itself without compromising the future generation.
- Sustainability is related to green development. At the beginning of the year, talks about smart growth and green development came to the forefront to reduce the urban footprint and create green roofs, sustainable environments, etc.
- Maintain its viability over time.

### Table Three

#### Exercise #1

#### **Point to one of two of the images that are important to you and explain why.**

- Images chosen:
  - 1, 23, 4, 25, 9, 16.
- Comments:
  - Preserve farms.
  - Affordable housing.
  - We do not want residents' tax payments to pay for infrastructure.
  - Do not encroach on farmland.
  - Waterfront.
  - Festivals.
  - Hospitals.

#### Exercise #2

#### **By 2051, Pickering will have...**

- No farmland and no commercial land.

- The best urban/rural balanced communities with corridors for natural and historical heritage.
- Agricultural and technology industries.
- Easy transitions between rural and urban areas.
- A community that supports the complete life cycle, and has valued employment and sufficient recreational opportunities, services, and business to support the population.
- Have all classes of farmland in north Pickering preserved.
- Beautiful, integrated communities with waterways, preserved agricultural areas, and commercial ventures for jobs and growth that recognize and protect the green spaces and waterways.
- World-class agricultural communities.
- Space for startup businesses.
- Pathways so that bicycles can be separated from pedestrians.
- Jobs with agriculture – internships and technology.
- More protected bike lanes.
- Small business startups and office spaces.

**By 2051, Pickering will be known for...**

- Towers/inclusive city.
- Corridors for healthy activities (e.g. walking, cycling, running).
- Preserving the fish corridor.
- Preserving waterways and agricultural lands.
- A community that supports the complete life cycle has valued employment and sufficient recreational opportunities, services, and business to support the population – in a visually pleasing, environmentally sustainable, and efficient way.
- World-class agricultural industry employing thousands of local residents.
- Environmental protection and sustainable.
- A great place to raise a family.
- Wonderful place to start your business.
- Strong relationship with the farm and community.
- College and universities.
- Safe and inclusive city.

**Exercise #3**

Vision:

**Do you resonate with the current Official Plan vision?**

- 1/5 participants at the table agree.
- 1/5 participants at the table somewhat agree.
- The remaining 3 participants did not respond to this question.

**What parts of the current Official Plan vision are still relevant?**

- Have a strong and balanced relationship between urban and rural sustainability.
- Healthy living.



- Relationships with the environment.
- Balance between urban and rural.

**What needs to be added or changed to the Official Plan vision?**

- Aging at home.

Priorities:

**Do you resonate with the current Official Plan priorities?**

- 1/5 participants at the table agree.
- 2/5 participants at the table somewhat agree.
- 2/5 participants at the table disagree.

**What parts of the current Official Plan priorities are still relevant?**

- Sustain and preserve rural settings.
- Sustain and preserve natural heritage features.

**What needs to be added or changed to the Official Plan priorities?**

- Colleges and universities.
- Ensure that the rural areas retain their heritage.
- Go into more detail - about businesses and growing jobs that are not just in warehousing and what people's lives will be like.
- Global connectivity makes it sound like the City of Pickering needs to follow what other jurisdictions are doing. This is nonsense. Be bold, think big, and lead!
- Urban design.
- Complete community.
- Fostering healthy settings, such as trails. Accommodate for changing needs and settlement patterns, such as other evolving cities in the GTA.
- More transit.
- More affordable housing.
- Culverts.
- High density.
- Create more new housing for newcomers, and starter homes.

**Exercise #4**

**Are there any important topics that you do not see included?**

- Employment Plan.
- Defined desired employers and industries.

**Additional Comments/Questions**

N/A



## Table Four

### Exercise #1

**Point to one of two of the images that are important to you and explain why.**

- Image 3—I dislike the townhomes built behind my home.
- Image 12—I am nostalgic for great memories on Pickering’s waterfront.
- Image 12—The Pickering waterfront is a destination enjoyed by people outside of the community, a draw for Pickering.
- Change is hard, but we have to move forward.
- Image 5—I am not against condos. However, there needs to be a sufficient supply of parking and enforcement of parking so that it does not spill out onto surrounding areas.
- Image 1—Avoid tiny condo units. Units should be appropriately sized to appeal to multiple household situations. There are not enough large condos—whether for families or retirees who still want a large space when they move out of their house. We need to design more condos for the needs of independent seniors.
- Image 4—The Tridel buildings are a great example of quality developments, with density and lots of green space, that result in a community within a community.
- Take inspiration from Swan Lake in Markham and Ballantree.
- Image 4—The best option.
- Ensure that buildings are designed for all uses and contingencies. During COVID, condos without balconies offered no outdoor amenities for residents during lockdowns.
- Image 25—Agricultural legacy should be protected.
- Make sure that we preserve our parks.

### Exercise #2

**By 2051, Pickering will have...**

- A major entertainment center (e.g., theatres and performing arts centers).
- Something to be proud of.
- City centre.
- Fully developed waterfront.
- Sufficient infrastructure.
- Infrastructure to match growth – roads, trains.
- Less trees. Electronic stations – cell phone towers.
- Great place to shop, live, and play.
- Many condos.
- Hospital expansion.
- Senior centres.
- Playgrounds.
- Improved transit system.
- Agricultural sustainability.
- To support the ever-increasing population.
- You cannot grow crops in developer’s concrete footprints.
- Soil is the soil of humanity.

**By 2051, Pickering will be known for...**

- Agriculture and sustainability.
- You cannot grow crops in concrete.
- Forests are the lungs of the world.
- Clean and well-taken-care-of city.
- Perks and recreation destinations.
- Proximity to the GO expansion.
- Various housing options.
- Facilities for seniors (recreational).
- Logical control of developer's plans.
- It can be known as Toronto natural playgrounds if steps are taken to make the corridor a national park.
- Congestion if immediate steps are not made.

**Exercise #3**

Vision:

**Do you resonate with the current Official Plan vision?**

- One participant at the table disagreed.
- The rest of the participants did not provide an answer to this question.

**What parts of the current Official Plan vision are still relevant?**

- Maintain agricultural protection and sustainability.

**What needs to be added or changed to the Official Plan vision?**

- To build Pickering in a manner that meets the evolving needs of ALL its people, sustains healthy urban and rural settings, and creates a unique and INCLUSIVE community interconnected with all other places, CULTURES, and people.
- Add inclusivity of all cultures to the vision statement.
- Replace unique with a diverse and welcoming community.

Priorities:

**Do you resonate with the current Official Plan priorities?**

- One participant at the table disagreed.
- The rest of the participants did not provide an answer to this question.

**What parts of the current Official Plan priorities are still relevant?**

- Wetland beach trail, renovation – wildlife protection.
- Enhance retail and business services.
- Multi-use community centers and theaters.
- Heritage Pickering Village.

**What needs to be added or changed to the Official Plan priorities?**



- Historical entrance signs to the village of Pickering (east and west entries).
- Entertainment and recreation.
- Right-sized units.
- A downtown that serves as a central attraction for shopping and entertainment.

#### Exercise #4

#### **Are there any important topics that you do not see included?**

N/A

#### Additional Comments/Questions

N/A

### Table Five

#### Exercise #1

#### **Point to one of two of the images that are important to you and explain why.**

- Image 21--Complete community – live/work/play, less distance to travel to day-to-day tasks.
- Image 21--Convenience, everything in one place. Concern about development, taking away stories that are easy to get to. Take other seniors to shop. Roads are not ready for the increased population. Challenges with travel traffic.
- Image 7--Gentle density. There needs to be a combination that can accommodate the needs and range of housing.
- Image 8—Low-density detached homes. Consider school needs as growth occurs. Ensure there is infrastructure to accommodate growth. Keep infrastructure up-to-date and add to accommodate growth.
- Image 18--Perfect blend of urban and rural living. I love the nature, essential character, use of trails and lovely parks. It's great for those moving here and those who are already here.
- Image 9--Stores and plazas need to know where they are going for density needs such as grocery shopping.
- Image 16 and 11--Greenspaces and places to walk. The beach needs to be wide and open and have fresh air.
- Consider building and using space by the casino, there are too many condos.

#### Exercise #2

#### **By 2051, Pickering will have...**

- Greenspace protected ones that exist.
- Healthcare services like hospitals and access wait times are too long right now.
- Downtown core with cafes and stores and places to explore.
- Harmony.
- A perfect blend of urban and rural.
- More trails and green spaces than today and places for birds.
- 250,000 people living in harmony.



- Perfect blend of urban and rural living.
- More trails and open spaces than today.
- Green spaces within the main core.
- Easy road system.
- Areas where people can shop, walk and eat.
- A second hospital.

**By 2051, Pickering will be known for...**

- Community spirit.
- Family friendly.
- Green space.
- Complete communities.
- Leader in sustainability and growth in an urgent way.
- Think about green design and buildings.
- Having a series of complete communities.
- A leader in sustainable housing.

**Exercise #3**

Vision:

**Do you resonate with the current Official Plan vision?**

- 1/5 participants at the table agree.
- 1/5 participants at the table somewhat agree.
- The remaining 3 participants did not provide an answer to this question.

**What parts of the current Official Plan vision are still relevant?**

- Keep what we have now. Keeping recreation. Spaces near businesses and commerce.
- Sounds good.
- Need to know what these mean on the ground. They sound good on paper, but we need details.

**What needs to be added or changed to the Official Plan vision?**

- They are a bit vague.
- Global connectivity is vague. What does it mean? It does not say anything.
- Healthy settings – this is beyond medical. Create complete communities that are walkable to preventative care and reduce stress.
- Urban and rural is very important to us.
- Create services for communities that create centers for the community.

Priorities:

**Do you resonate with the current Official Plan priorities?**

- 3/5 participants at the table agree.
- 2/5 participants at the table somewhat agree.

**What parts of the current Official Plan priorities are still relevant?**

- These are hard to disagree with.
- Unique community Interconnected. Ideally, this means interconnected transit to move around the city.

**What needs to be added or changed to the Official Plan priorities?**

- Well done, but it could be a bit more specific.

**Exercise #4**

**Are there any important topics that you do not see included?**

- For growth management and urban structures, there needs to be employment opportunities that bring industry and business.
- For housing and affordability, transportation is a big issue for the community. Cars need to be taken off the road, and better public transit options are needed.

**Additional Comments/Questions**

- Pickering Flea Market – what is happening to the building?
- Taxes are too high.

**Table Six**

**Exercise #1**

**Point to one of two of the images that are important to you and explain why.**

- Images Selected:
  - 13, 14, 8, 20, 10, and 11.
- Comments:
  - I am interested in maintaining the natural areas. I have concerns about flooding.
  - Concerns with high densities. I would like access to parks, trails, and recreational areas. Good streetscape.
  - Connectivity is missing.
  - There is not enough parkland.

**Exercise #2**

**By 2051, Pickering will have...**

- No airport.
- More recreation.
- Better jobs.
- More parks.
- More cycling.
- Leading worldwide hydrologic innovation in Northeast Pickering.
- A post-secondary institution.
- A new hospital.

- A beautiful, human-friendly lakefront where people will gather to walk with family along the lake and go to events and concerts.
- A beautiful streetscape and a vibrant waterfront community that is a destination for families in the GTA. Its proximity to Rouge Park. And access to the trail network from the lake to the Rouge Valley National Park is an incredible opportunity.

**By 2051, Pickering will be known for...**

- Parks.
- Schools.
- High-paying jobs.
- Environmental sustainability throughout Pickering.
- Education and training.
- Medical healthcare.
- Its parks and green spaces, the beautiful heritage district of White Whale, the trail connected to Rouge Park, and healthy agrotourism based on its northern agricultural lands.
- I would like to think it could be known for doing what is right for the environment, well-being, and climate resilience.

**Exercise #3**

Vision:

**Do you resonate with the current Official Plan vision?**

- 4/6 participants at the table somewhat agree.
- 2/6 participants at the table disagree.

**What parts of the current Official Plan vision are still relevant?**

- Vision is vague, not aspirational.
- Current development does not reflect the vision.
- Want a safe community with opportunities and greenspace.
- Family and community.
- Urban and rural sustainability.

**What needs to be added or changed to the Official Plan vision?**

- Family-oriented community.
- Concerns about people leaving the city after the age of 18.
- Looking for more jobs, hospitals, parks, and commercial to retain the population.
- Local community connectivity.
- Pickering must go above and beyond the old plan and provincial standards.
- Pickering must be grander in innovation, not just pursuing a status quo official plan.
- Stronger vision to reflect more possibilities.
- More local and community connectivity rather than global connectivity.
- Reinforce sustainability.
- More local connectivity means more connections between urban and rural areas.



- More focus on assets (lakeshore, rural/agricultural, heritage, environmental) and human-centered, pedestrian-friendly downtown.
- Walkable.

Priorities:

**Do you resonate with the current Official Plan priorities?**

- 1/6 participants at the table agree.
- 4/6 participants at the table somewhat agree.
- 1/6 participants at the table disagree.

**What parts of the current Official Plan priorities are still relevant?**

- Less fluffy, please.
- Very vague.
- They are all relevant but not the most relevant.

**What needs to be added or changed to the Official Plan priorities?**

- Should focus on family and community.
- Information on education and healthcare.
- What does global connectivity mean? We need local connectivity.
- Instead of global connectivity, local connectivity is more important.
- Innovated technology, like in Silicon Valley.
- Need great planning and community elements to retain talent.
- Expansion is fine as long as it includes infrastructure development, transportation, hospitals, opportunities, places for families, universities, and schools, better waste management, community gathering, protecting green space, and development of lakeshore extension.
- Define healthy settings.
- Maintain agricultural foundation.
- Stop developing around a dying mall.
- Community and local connectivity, not global.
- Walkable, green space, trails, low carbon community, good access to public transit, heritage conservation network.
- How is a healthy setting defined?
- So vague so far.
- Vibrant all-ages community, climate resiliency, community connectivity, walkable community.

**Exercise #4**

**Are there any important topics that you do not see included?**

N/A

**Additional Comments/Questions**

N/A